



# POSTGRADUATE STUDY AND RESEARCH

## HANDBOOK 2020



**CIT School of Graduate Studies**  
**t: 021 433 5099 e: [graduate.school@cit.ie](mailto:graduate.school@cit.ie)**

**[www.cit.ie/graduateschool](http://www.cit.ie/graduateschool)**



# WELCOME

## *FROM THE DEAN OF GRADUATE STUDIES*

Every year a growing number of graduates select CIT as the destination of choice for their postgraduate education. As a CIT Masters or PhD student, you can expect the support of staff that will guide and mentor you along your chosen career path. Whether pursuing a research or taught programme, you can expect to work on solving complex problems in cutting-edge research and innovation that is linked directly to Ireland's smart economy in areas such as business, humanities, engineering, art, bioinformatics, optoelectronics, medical devices, sustainable energy, exercise & health, media & communications technologies, electronics, information technology, entrepreneurship, marketing, and music. Of course, it also helps greatly that CIT boasts state-of-the-art buildings and laboratories with world-class facilities that enable postgraduate students to reach their full potential. The fact that CIT researchers attract funding from enterprise and from a wide range of National, European and International funding programmes provides the financial engine that supports these graduates in following their postgraduate dream.

So, the clear message here is: as a highly-motivated, ambitious graduate, why not avail of the opportunities at CIT for a Masters or PhD by research? Learning at CIT gives you a choice of four campuses distributed across a compact city with a vibrant sporting, music and cultural life. And when the time comes to leave CIT, you will join our 100,000 plus graduates, with many of our alumni reaching the top of their professions. You will definitely make a great investment in your future by choosing a CIT postgraduate programme.



**Dr Stephen Cassidy**  
Dean of Graduate Studies

# CONTENTS

About Cork Institute of Technology	6
International Students	10
Postgraduate Fees	13
School of Graduate Studies	15
Postgraduate Degree by Research	16
Postgraduate Degree Programmes (Taught)	20-52

<b>Business &amp; Humanities</b>	<b>20</b>
----------------------------------	-----------

MSc in Marketing Practice	21
MSc in International Business	22
MA in Global Business Practice	23
MSc in Digital Marketing Strategy	24
MA in Human Resource Management	25
Master of Business Administration (MBA) in Strategy	26
MSc in Applied Accounting	27
MA in Integrative Psychotherapy	28
MA in Play Therapy	29

<b>Engineering</b>	<b>30</b>
--------------------	-----------

MEng in Civil Engineering (Environment and Energy)	31
MEng in Structural Engineering	32
MEng in Chemical & Biopharmaceutical Engineering	33
M.Arch (Architecture)	34



## **Science & Informatics** **35**

MSc in Data Science & Analytics	36
MSc in Cloud Computing	37
MSc in Cybersecurity	38
MSc in Information Design & Development	39
MSc in Software Architecture & Design	40
MSc in Artificial Intelligence	41

## **Music** **42**

MA / MSc in Music & Technology	43
MA in Music (Performance/Conducting/Composition)	44

## **Art, Design & Media Communications** **45**

MA in Art Therapy	46
MA in Art & Process	47
Professional Master of Education (Art & Design)	48
MA in E-learning Design and Development	49
MA in Public Relations with New Media	50

## **Graduate Profiles at a Glance** **51**



**Note:** This symbol indicates that International Students are eligible to apply for this course.



# ABOUT

## CORK INSTITUTE OF TECHNOLOGY

[www.cit.ie](http://www.cit.ie)

CIT has four principal Campuses:

- Bishopstown Campus situated in the suburbs of Cork City
- CIT Crawford College of Art & Design (CIT CCAD) situated in Cork City
- CIT Cork School of Music (CIT CSM) situated in Cork City
- National Maritime College of Ireland (NMCI) situated in Ringaskiddy, Cork Harbour.

### **Bishopstown Campus**

The Bishopstown Campus is the main centre, and is the location for courses in Business, Science, Computing, Engineering and Humanities. Also located here are Student Services, Administration, Research Centres and Industry Support Centres. The Bishopstown Campus is situated in the western suburbs of Cork city. Leisureworld Sports Centre, which includes both a 25m and an 18m swimming pool, is right next door. Just a few minutes walk away are the suburbs of Bishopstown and Wilton with shops, restaurants and sports facilities. The city centre is just a short bus ride away.

The Student Centre is the main focus for student activity and leisure. It has all the services you could hope for, such as a common room, restaurant, meeting rooms, bank, supermarket, and various student services.

The Bishopstown Campus is home to the Institute's three research centres covering the areas of the Internet of Things, Photonics and Lifesciences & Wellbeing. They occupy two state-of-the-art research buildings and are home to over 150 researchers working on fascinating research for society and industry.

The Rubicon Centre is a business incubation centre for young graduates. It provides a supportive on-campus environment for start-up businesses. The CIT Information Technology Centre consists of computer laboratories, seminar rooms and open access computer stations for hundreds of students. All these computers are fully networked and online.

The library provides books, journals, audio-visual and electronic information resources appropriate to all subjects taught in the Institute. The library provides access to online resources; including journals, standards, and reports, and electronic catalogues of worldwide libraries; and 500 study places.



### CIT Crawford College of Art & Design (CCAD)

<https://crawford.cit.ie>

CIT Crawford College of Art & Design is a Constituent College of CIT. CIT Crawford College of Art & Design (CCAD) is a vibrant multi-campus College, which has been providing education in Art for over 200 years.

Crawford graduates are among Ireland's top artists, designers, media designers and communicators, art therapists and art educationalists. Whether you are interested in Fine Art or Contemporary Applied Art, Visual Communications or Creative Digital Media or hoping to do postgraduate study in Art Therapy, Art & Design Education, Art & Process, E-learning Design and Development, or Public Relations with New Media - we have something for you.

The vibrant city of Cork - known as the City of Festivals - is home to national and international art galleries, the National Sculpture Factory, a range of artist led initiatives such as Cork Printmakers, the Backwater Artists Group and the Guesthouse, and of course, is an ideal place to work in the creative industries.

Facilities include lecture rooms, library, studios, and personal work-areas for students. There are well equipped workshops and laboratories for an extensive range of specialist areas. The CCAD annual Degree Show is one of the highlights of the arts calendar in Cork.



### CIT Cork School of Music (CSM)

<https://csm.cit.ie>

CIT Cork School of Music is a Constituent School of CIT. The CSM has many award winning bands, chamber music ensembles, choirs, drama groups, opera groups, and orchestras - with the senior ones undertaking extensive national and international tours, broadcasting, and making commercial recordings.

**Facilities:** A purpose-built home for the CSM opened in September 2007 and provides nearly 13,000m<sup>2</sup> of state-of-the-art facilities. This was supplied by means of a Public Private Partnership (Department of Education & Science & Hochtief PPP Solutions). It includes:

- 60 teaching/practice studios (equipped with a fleet of Steinway grand pianos)
- 380-seater auditorium
- 120-seater drama theatre
- Movement room & changing facilities
- Professional 48-track, digital HD recording studio
- Electronic music studio
- Piano labs
- Audio lab
- MusicIT lab
- Double bass studio
- Early music (organ & harpsichord) studio
- Harp studio
- Percussion studio
- Postgraduate centre



### National Maritime College of Ireland (NMCI)

[www.nmci.ie](http://www.nmci.ie)

This purpose built College is on a 10 acre campus and located 18km from Cork city, in Ringaskiddy, Co. Cork. It provides training and education for the Merchant Marine and the non-military needs of the Irish Naval Service. Specialist spaces including survival facilities, seamanship and shipwrights' workshops, fire fighting/damage control, jetty and lifeboat facilities and engine room are provided.

The College also provides specialised simulation equipment in the areas of navigation, bridge training, communications, engineering machinery operations, liquid cargo handling/damage control and vessel traffic systems. These facilities fully comply with the most up to date international standards and requirements.

The NMCI houses the Halpin Centre for Maritime Research which is Ireland's only research centre devoted to the global maritime industry. Halpin researchers work with collaborators in over 23 countries and use the latest technologies on sea, land and space to solve complex multidisciplinary problems.

**Cork Institute of Technology and  
The Institute of Technology Tralee  
are working together to create the  
Munster Technological University.**

**TOGETHER  
WE ARE**

**18,000+**  
LEARNERS

**6**  
CAMPUSES  
ACROSS CORK  
AND KERRY

**140+**  
COURSES AND  
PROGRAMMES

**100+**  
CLUBS AND  
SOCIETIES

**MTU** will be a centre of excellence in education, research and engagement for **career-focused learners seeking enterprise and community-ready qualifications and experiences**. Our entrepreneurial focus opens a world of opportunities.



## LEADING RESEARCH

MULTI-DISCIPLINARY,  
INDUSTRY-FOCUSED  
RESEARCH PROGRAMMES  
WITH NATIONAL AND  
INTERNATIONAL PARTNERS

## PARTNERING INDUSTRY

DYNAMIC CROSS-SECTOR  
RELATIONSHIPS WITH  
START-UPS, INNOVATORS  
AND INDUSTRY LEADING  
COMPANIES

## INVESTING IN THE FUTURE

STATE-OF-THE-ART  
RESEARCH, EDUCATION,  
ENTERPRISE, CULTURAL  
AND SPORTS FACILITIES



# INTERNATIONAL STUDENTS



**Note:** This symbol indicates that International Students are eligible to apply for this course.



<https://international.cit.ie>

CIT's excellence in higher education is recognised worldwide, with close to 500 international students enrolled from over 50 different countries. We have over 180 international institutional partners, and welcome visiting staff and students from all over Europe, USA, Canada, Malaysia, India, the Middle East, and Vietnam every year.

Internationalisation is central to CIT's ambitions, and our vision is "to develop graduates as global citizens who have the necessary abilities and confidence to live, work, achieve and participate fully in an international environment".

CIT's International Office provides end-to-end support to both incoming and outgoing students embarking on an international experience. CIT's International Student Society is the only society in Ireland that has

won Best Society at the BICS Awards on three occasions and is therefore an invaluable support to help international students adjust to a new culture and meet new friends from all over the world!



**"CIT's hands-on approach to learning really gives you a practical insight into your degree, and the industry you are hoping to enter into."**

Crystal Anderson, MA in Public Relations with New Media



## How to apply as an International Student

**Applications are accepted from 1st November 2019 to 31st May 2020 which is the closing date.**

Please apply through OASIS, our online application system for International students. You can find out more at <https://international.cit.ie/Applyhere>.

You will need the following documents with your application

- **Photo Page of Passport**
- **School Leaving Examination Certificate OR High School Transcript.** Include forecast results if final results are not available.
- **Academic Transcript and Proof of Final Degree** (required for transfer and postgraduate applicants) & Academic Marking/Grading Scheme
- **English Language Proficiency** score for applicants whose first language is not English. i.e. IELTS Academic Certificate, TOEFL.
- **Curriculum Vitae/Résumé** and **Statement of Purpose**

## Testimonials



**"I have become more knowledgeable and open-minded due to this experience, and have made memories that will last me a lifetime."**

Madison Ward, MSc in International Business



**"The academic staff of CIT are very helpful with many often going beyond the call of duty to assist me in my research work."**

**With staff and students alike being approachable, making friends is very easy. This is an important aspect to consider for overseas students being far from home."**

Quang An Phan, PhD Researcher







**Closing Date:** 31st May

## International Tuition Fees/Scholarships

The current annual tuition fee in CIT is €12,000 for all levels of study. A limited number of 25% scholarships are available between 1st November and 31st March, while a limited number of 15% scholarships are available between 1st April and 31st May after which applications are no longer accepted. Please refer to [international.cit.ie/fees](http://international.cit.ie/fees) for more information. Students will be evaluated for scholarship eligibility based on the documents submitted as part of their application.

## Accommodation

CIT does not have on-campus accommodation, however, there are several student apartment complexes in close proximity to the campus, please check the Accommodation website for details and rates: [www.cit.ie/accommodation](http://www.cit.ie/accommodation). We recommend that you book your accommodation as soon as you receive an offer from CIT, as there has been a significant shortage of accommodation for students in Cork in recent times.

## Student Visa

You may be required to apply for a study visa if you are offered a place in CIT. Please check [www.inis.gov.ie](http://www.inis.gov.ie) for more information. On arrival to Ireland, the CIT International Office will guide you through the local registration process here in Cork. There is a €300 fee for registration and you will be issued an Irish Residence Permit (IRP) identification card. You will also need to provide evidence of at least €3,000 in your bank account, or evidence of being supported through a scholarship programme.

## Graduate Visa

International postgraduate students are eligible to apply for a graduate visa following successful completion of their programme. Graduates with an award at Level 8 on the National Framework of Qualifications will be granted a 1 year visa, and graduates with an award at Level 9 or above on the National Framework of Qualifications will be granted a 2 year visa. The purpose of this scheme is to support third level graduates to remain in Ireland for the purpose of seeking employment and applying for a Green Card or Work Permit.

## Contact Us

International Office  
**E:** [international@cit.ie](mailto:international@cit.ie)  
**T:** +353 21 433 5300

## Social Media

[Facebook.com/citinternational](https://www.facebook.com/citinternational)  
 @CIT\_intl on Twitter  
 @citinternational on Instagram



# POSTGRADUATE FEES

[www.cit.ie/fees](http://www.cit.ie/fees)

Details of course fees are included with the taught Masters course information in this handbook.

Students should note that the Fees quoted relate to the academic year 2020 -2021 only and are subject to change on an annual basis.

Except where stated, course fees cover the cost of tuition only. Registration fees for professional bodies etc. are payable separately to these institutions.

Full-time (On Campus) EU Postgraduate Students will also be liable for the €7 USI Levy.

For further information on the USI levy please go to:

[http://www.citsu.ie/\\_7-levy](http://www.citsu.ie/_7-levy)

Students will be notified of their fees by e-mail to their CIT e-mail account and in all cases, course fees must be paid before attending lectures.

Students can check their account balance and pay their fees online at [www.cit.ie/pay](http://www.cit.ie/pay)

Failure to pay fees on time will result in a late payment fee of 10% being applied and students will no longer have access to IT Facilities.

- Where course fees are being funded by an employer, you are asked to seek payment or reimbursement from your employer. Where an employer requires an invoice in their Company name the employer must e-mail [fees@cit.ie](mailto:fees@cit.ie) with the relevant details and the amount of Fees they will be funding.

- For Semesterised courses, students pay for the relevant modules at the beginning of each semester. Payment of fees by laser, debit or credit card can be made online at [www.cit.ie/pay](http://www.cit.ie/pay) or by phoning +353 (0)21 433 5440.

Students should familiarise themselves with the relevant section of the Student Regulations.

**Please note** that the Fees Office will use your CIT e-mail account for important communications.

## Withdrawing from a course

Students who wish to withdraw from a course must notify the admissions office and complete a withdrawal form. Where Students fail to inform admissions of their withdrawal they will remain liable for any unpaid fees on their accounts. E-mail [admissions@cit.ie](mailto:admissions@cit.ie)

## Refund Policy

All courses at CIT will run subject to sufficient student numbers. Where a course cannot proceed, applicants will be contacted and advised on alternative study options.

- A full refund will be given to all applicants for courses which do not proceed.
- A full refund will be given to students who withdraw before 5th September.
- Where students pay the online application fee to accept an offer they have 14 days in which to withdraw and claim a full refund provided the course has not commenced.

- A full refund (less 15% administration fee) will be given to applicants for short courses, if requested up to one week after course commencement. No refunds will be given thereafter. A short Course is less than 12 weeks duration.
- A full refund (less 15% administration fee) will be given to applicants for semesterised and full year courses if requested up to one month after the commencement of Semester 1 and before the end of February for Semester 2. No refunds will be given thereafter.
- All applications for refunds must be made on the appropriate Refund Form which can be requested from the CIT Fees Office (e-mail [fees@cit.ie](mailto:fees@cit.ie)).

**NB:** Students are reminded to ensure that they have clearly understood all the terms of their enrolment with CIT, in particular clauses concerning refunds, deferments, waivers, course transfers, and visa applications (when applicable).

## SUSI Grants

Full-time Postgraduate Students may be eligible for a SUSI Grant. To check your eligibility please go to:

<https://susi.ie/eligibility/postgraduate-student/>

Depending on the level of a student's reckonable income, they may qualify for either a Postgraduate Fee Contribution of €2,000 or a Postgraduate Fee Grant, up to a maximum of €6,270, towards the cost of their fees. In order to receive the maximum funding, students must meet the criteria for the **special rate of grant**.

Students should check the income thresholds and grant rates prior to submitting an application. Please note that if you were in receipt of a grant for your undergraduate degree the income limits are lower for Postgraduate Courses.

For the 2020 - 2021 academic year, your application will be assessed on **gross income** from all sources for the period 1st January 2019 to 31st December 2019.

<https://susi.ie/eligibility/postgraduate-student/postgraduate-income-thresholds-and-grant-award-rates/>

If you think you are eligible for the student grant, you should apply as soon as the grants scheme opens in April 2020. You do not need to know which course or college you will be attending in order to submit an application. **Only when your application has been completed in full and submitted to SUSI can your eligibility be determined.**

## SUSI Support Desk

The SUSI Support desk is the single contact point for all e-mail and telephone queries. For opening times visit **[www.susi.ie](http://www.susi.ie)**.

- E-mail **[support@susi.ie](mailto:support@susi.ie)**
- Telephone **+353 76 108 7874**
- Facebook: Susi Support  
Twitter: Susi Helpdesk

## Tax Relief

Tax Relief on Tuition Fees - Third Level Education Courses must be at least 2 academic years duration for undergraduates and 1 year for postgraduate course. Tax relief is available for one course per individual in a tax year and is at the standard rate of tax.

<http://www.revenue.ie/en/tax/it/leaflets/it31.html>



# SCHOOL OF GRADUATE STUDIES

CIT is committed to supporting and promoting all aspects of academic formation of postgraduate students through its constituent faculties, colleges, schools and Academic Units. Such aspects include the research project, taught modules, personal development plan, induction, progression and transfer.

Postgraduate research is carried out under the supervision and guidance of appropriately qualified members of academic staff of the Institute. A student may register at CIT for a research programme leading to awards at Level 9 (Masters) and Level 10 (Doctoral), including doctorates carried out partially or completely in the workplace. CIT provides opportunities for postgraduate study on both a full-time and a part-time basis for individuals with diverse academic, industrial and professional backgrounds.

The School of Graduate Studies (SGS) Office directs development of all aspects of postgraduate study within the Institute. The responsibilities of the SGS Office include coordinating together with academic and administrative processes relevant to postgraduates providing advice and support for both postgraduate students and research supervisors.

## School of Graduate Studies (SGS) Office

The SGS Office is located on the first floor of the Administration Centre in the CIT Bishopstown Campus.

Office Hours:

8.00am - 1.00pm

2.00pm - 4.00pm

## Why consider a Postgraduate Degree by Research?

Engaging in a postgraduate degree by research at CIT will provide you with cutting edge analytical skills, supported by the experience of working within a dynamic environment alongside national and international researchers. You will use leading edge techniques and equipment whilst being supervised to the highest level. We understand that your career is important to you, so during your time here as a research postgraduate you will be provided with a suite of supports, from supervision and mentoring to developing a personalised career development plan which will be integrated into your research. You will also have the opportunity to take taught modules which will not only enhance your research, but will make your future, wherever that may be, all the brighter. Our research teams often work closely with industry, so if you see your future career in industry then a research postgraduate qualification from CIT is something for you to seriously consider.

## Scholarships and Funding

There may be funding or scholarships available in your area. For further information, please contact the head of department for your chosen discipline area.

## Postgraduate Research Fees 2020/2021

### Full-time EU Postgraduate Research Students

\*Please note that students are required to pay the full fee outlined below should they finish earlier than expected. The fee relates to the qualification achieved, NOT the duration, and must be paid in full prior to graduation.

For Non-EU Postgraduate Research fees, please see page 12.

### Masters by Research €11,000\*

- €5,500 per annum Full-time over 2 Years plus €7 USI Levy;
- Full-time students who require additional time to complete their studies will be charged €757 for 1 additional year, and €120 per annum thereafter.
- €2,750 per annum Part-time over 4 Years;
- Part-time students who require additional time to complete their studies will be charged €375 for 2 additional years, and €120 per annum thereafter.

### Doctor of Philosophy PhD €16,500\*

- €5,500 per annum Full-time over 3 Years plus €7 USI Levy;
- Full-time students who require additional time to complete their studies will be charged €757 for 1 additional year, and €120 per annum thereafter.
- €2,750 per annum Part-time over 6 Years;
- Part-time students who require additional time to complete their studies will be charged €375 for 2 additional years, and €120 per annum thereafter.

[www.cit.ie/fees/students/postgraduate](http://www.cit.ie/fees/students/postgraduate)



# POSTGRADUATE DEGREE BY RESEARCH

## What types of Postgraduate Research can I apply for?

### RESEARCH MASTERS

Learning outcomes at Level 9 (whether by research or otherwise) relate to the demonstration of knowledge and understanding which is at the forefront of a field of learning. The outcomes relate to the application of knowledge, understanding and problem solving abilities in new or unfamiliar contexts related to a field of study. The outcomes are associated with an ability to integrate knowledge, handle complexity and formulate judgements. Outcomes associated with Level 9 would link with employment as a senior professional or manager with responsibility for the work outputs of teams. Students for the Degree of Master by Research will be expected to acquire a mastery of the principles and theory underlying their chosen subject and a knowledge and appreciation of the relevant literature.

The CIT Master's degree will also include a structured taught element to provide the student with the skills and knowledge necessary for the pursuit of the proposed research. This will consist, at a minimum, of a 5 credit Core Research Skills module. Students may complete up to a maximum of 15 credits of approved learning in the form of relevant transferrable skills modules, discipline-specific modules, and work placement or other professional learning. This should be agreed beforehand with

the student's Graduate Supervisory Panel and be included in the student's Personal Development Plan.

### Entry requirements

In order to qualify for entry to the Masters Register, an applicant is normally required to possess an Honours Bachelor Degree (Level 8) with a performance equivalent to at least a second class honours in a relevant field of study from a recognised degree-awarding institution.

### Duration of studies & leading to Master's Degree

The normal duration of studies leading to the Degree of Master by Research for full-time students is twenty-one months (two academic years) from the date of admission to the Masters Register. In exceptional circumstances, the Institute may vary the required and permitted duration of the programme.

### Application Procedure

#### Step 1: Choose a programme

CIT currently offers Masters by Research across all discipline areas within the Institute.

#### Step 2: Check entry requirements

Students should confirm they are eligible to commence a research masters, if you have any queries please contact the SGS Office by e-mail [graduate.school@cit.ie](mailto:graduate.school@cit.ie) or phone 021 4355099.

#### Step 3: Find a supervisor

Once students know which area or topic they wish to research, a compatible supervisor should be sought. Please contact the Head of Department for that discipline area who will advise you regarding a potential supervisor. Your supervisor will help you prepare an outline proposal along with an application form to become registered as a student in CIT.

#### Step 4: Application

Completed application forms are returned to the SGS Office along with supporting documents such as transcript of results and outline proposal of your research. Once you are registered, the fees office will contact you about paying your appropriate fee.





## DOCTOR OF PHILOSOPHY

Learning outcomes at Doctoral Level 10 relate to the discovery and development of new knowledge and skills through original research, or original application of existing knowledge, and the delivery of findings at the frontiers of knowledge and application that are of publishable standard in peer-reviewed literature or by equivalent peer review through performance or exhibition.

The Doctor of Philosophy (PhD) degree programme always involves the advancement of knowledge through original research, in which the student demonstrates outstanding scholarship and ability. It involves an individual programme of research leading to the submission of a doctoral thesis describing a coherent body of original work by the student. The thesis comprises a written dissertation, which may be accompanied by a portfolio or supporting artefacts, and is defended at an oral examination. Through it, the candidate must demonstrate that he/she has conducted original, independent research and has a broad knowledge of a particular field of study and a comprehensive knowledge of the specialist area upon which their research is focused.

### All doctorates in CIT are structured with the following key characteristics:

(a) The core component of a structured PhD programme is the advancement of knowledge through original research; at the same time the structured PhD is designed to meet the needs of an employment market that is wider than academia;

(b) A high quality research experience, training and output consistent with international norms and best practice;

(c) To support the original research activity, the following elements are included:

- a formalised integrated programme of education, training and personal and professional development activities
- the development of discipline-specific knowledge, research skills and generic/transferable skills
- declared outcomes and graduate attributes in line with national and international best practice

### Entry requirements

Direct entry onto the Doctoral Register is permitted for applicants who possess an Honours Bachelor Degree (Level 8) with a performance equivalent to at least a second class upper division honours in a cognate area related to that of their proposed research from a recognised degree-awarding institution. Such applicants are required to complete a probationary period before their registration is confirmed.

Direct entry onto the Doctoral Register is also permitted for applicants who possess a Master's degree in a cognate area related to that of their proposed research from a recognised degree-awarding institution. Such applicants are required to complete a probationary period before their registration is confirmed.

Other applicants will normally be required to be entered on the Masters Register for at least one year full-time (or equivalent) before applying for transfer to the Doctoral Register.

### Duration of studies & leading to Doctoral Degree

The normal duration of studies leading to the Doctoral Degree for full-time students is four academic years from the date of

admission to the Doctoral Register. In exceptional circumstances, the Institute may vary the required and permitted duration of the programme.

## Application Procedure

### Step 1: Choose a programme

CIT currently offers Doctor of Philosophy degrees in the following areas:

#### Business

- Management & Enterprise
- Marketing
- Organisational and Professional Development

#### Engineering

- Electrical & Electronic Engineering
- Mechanical, Manufacturing & Biomedical Engineering
- Process, Energy & Transport Engineering

#### Science

- Biological Sciences
- Computer Science
- Physical Sciences

### Step 2: Check entry

**requirements** Students should confirm they are eligible to commence a Doctoral Degree, if you have any queries please don't hesitate to contact the SGS .

### Step 3: Find a supervisor

Once students know which area or topic they wish to research, a compatible supervisor should be sought. Please contact the Head of Department for that area who will advise you regarding a potential supervisor. Your supervisor will help you prepare an outline proposal along with an application form to become registered as a student in CIT.

### Step 4: Completed Application

forms are returned to the SGS Office along with supporting documents such as transcript of results and outline proposal of your research. Once you are registered the CIT Fees Office will contact you about paying your appropriate fee.

## The CIT Research Community

The main focus of CIT research is to engage in excellent research that has social and economic impact in the region and beyond, creating sustainable employment, attracting and nurturing new businesses and educating a talented pool of innovative researchers. CIT researchers work with a wide range of world class international collaborators in Europe, India, Russia, China, Brazil, and the USA.

CIT's research activities are structured to have a direct and meaningful impact on industry, whilst at the same time being grounded in research excellence. Research activity in CIT is organised around Thematic Research Areas which are large multidisciplinary groups of researchers working on high-level research of strategic importance to the nation and smaller groups or individual researchers. As a CIT postgraduate researcher you will work within the Institute's Research and Innovation Ecosystem, designed to give you the experience that will drive your career in whatever direction you wish to take it.

## The Thematic Research Areas are:

### Information and

### Communications Technology

research and innovation involving engineers and scientists from electronic engineering and computing takes place in the NIMBUS Research Centre and the SIGMA and RIOMH software groups. All work closely with industry. Activity in NIMBUS focuses on Cyberphysical Systems and the Internet of Things (IoT). NIMBUS is CIT's largest research centre and Ireland's largest centre devoted to IoT research. SIGMA focuses on applying advanced software and computational

techniques to real world applications. RIOMH focuses on computing for virtualisation and infrastructure, security and data analytics. For RIOMH contact donna.oshea@cit.ie.

For NIMBUS contact john.barrett@cit.ie and for SIGMA contact haithem.afli@cit.ie

### Lifesciences and Wellbeing

research includes the BioExplore Research Centre, the NutRI, and MEDIC groups. BioExplore focuses on bio-analysis, diagnostics, antimicrobial screening, bioinformatics, peptide engineering and mass spectrometry. MEDIC focuses on the development of biomedical devices for the healthcare market. For BioExplore contact aidan.coffey@cit.ie and for MEDIC contact paddy.mcgowan@cit.ie. For NutRI contact aoife.mccarthy@cit.ie

**Photonics** research includes the CAPPA Research Centre which focuses on generating and harnessing light, impacting a wide range of areas, such as telecommunications, gas sensing, food and medical imaging. CAPPA works closely with industry. The Astronomy and Instrumentation Group (AIG) promotes the use of space science by industry and academia and develops and uses instruments for astronomy and other application domains. For CAPPA contact liam.lewis@cit.ie and for AIG contact niall.smith@cit.ie

### Maritime Energy and Sustainable Environment Research Cluster (MESE)

research includes the Halpin Research and Innovation Centre, the Mechanical Systems Simulation and Optimisation (MeSSO) Group, and the Sustainable Infrastructure Research and Innovation Group (SIRIG). Halpin focuses on

maritime research from its base at the National Maritime College of Ireland, MeSSO focuses on optimising the performance and design of mechanical systems, and SIRIG focuses on research related to sustainability with an emphasis on engineering infrastructure. For Halpin contact eileen.oleary@cit.ie, for MeSSO contact paul.osullivan@cit.ie and for SIRIG contact joe.harrington@cit.ie.

### Exercise and Health

research includes the Hex-Spo Research Group. Hex-Spo focuses on Health & Exercise Promotion and Sports Coaching Science. Contact tara.copping@cit.ie or con.burns@cit.ie.

### Creative and Performing

**Arts** research is of increasing importance that has impacts across many disciplines. It is an area that is seeing significant growth. CIT Crawford College of Art and Design (CCAD) and the CIT Cork School of Music (CSM). For CCAD contact catherine.fehily@cit.ie and for CSM contact maria.judge@cit.ie

### Entrepreneurship, Competitiveness and

**Innovation** research includes the Hincks Centre for Entrepreneurship Excellence and the V-Linc Group. Hincks focuses on research in enterprise and entrepreneurship development. The objective is to further our understanding of how entrepreneurship contributes to economic growth, competitiveness and societal wellbeing. V-Linc focuses on research into clustering of companies and how this benefits their competitiveness. For Hincks contact helen.mcguirk@cit.ie and for V-Linc contact john.hobbs@cit.ie.

## Education and Learning

research includes the Enterprise Engagement and Experiential Learning Group (E3LG) and the Educational Technology Group (EDTECH). E3LG focuses on engagement interactions between

higher education institutions and external organisations, with a particular focus on experiential learning. EDTECH focuses on pedagogically-orientated research into the application of new and emerging technologies to facilitate

learning at all levels. For E3LG contact [irene.sheridan@cit.ie](mailto:irene.sheridan@cit.ie) and for EDTECH contact [gearoid.osuilleabhain@cit.ie](mailto:gearoid.osuilleabhain@cit.ie).

The table summarises the thematic areas and the types of research conducted within each and may be a useful guide. If your research interests are not covered within the Thematic Research Areas then you can always contact the SGS Office for advice and assistance - [graduate.school@cit.ie](mailto:graduate.school@cit.ie)

Thematic Research Areas	
<b>Information and Communications Technology</b> <ul style="list-style-type: none"> <li>Internet of Things</li> <li>Cyberphysical systems</li> <li>Cybersecurity / data analytics</li> <li>Energy</li> <li>Water systems</li> <li>Industry</li> <li>Smart cities / People Behaviour / Assisted Living</li> <li>Machine Learning</li> <li>High Performance Computing</li> </ul>	<b>Health and Exercise</b> <ul style="list-style-type: none"> <li>Health and Exercise Promotion</li> <li>Sport Science</li> </ul>
<b>Maritime, Energy and Sustainable Environment</b> <ul style="list-style-type: none"> <li>Maritime safety &amp; security; shipping transport and logistics; education and training</li> <li>Energy retrofit</li> <li>Building management</li> <li>Micro-grid control</li> <li>Mechatronics</li> <li>Water &amp; Wastewater Treatment</li> <li>Renewable Energy</li> <li>Sediment Behaviour &amp; Management</li> <li>Structural Engineering</li> <li>Engineering Infrastructure</li> </ul>	<b>Photonics</b> <ul style="list-style-type: none"> <li>Optics</li> <li>Semiconductor Lasers</li> <li>Spectroscopy</li> <li>Optical instrumentation</li> <li>Astronomy and Space Science</li> </ul>
<b>Life Sciences and Wellbeing</b> <ul style="list-style-type: none"> <li>Molecular diagnostics</li> <li>Bio-therapeutics</li> <li>BioInformatics</li> <li>Virology</li> <li>Gait analysis</li> <li>Biomedical Engineering / Biomedical Devices</li> <li>Analytical chemistry</li> <li>Toxicology</li> </ul>	<b>Entrepreneurship, Competitiveness and Innovation</b> <ul style="list-style-type: none"> <li>Enterprise and Entrepreneurship Development</li> <li>Clustering</li> </ul>
	<b>Creative and Performing Arts</b> <ul style="list-style-type: none"> <li>Fine art</li> <li>Art therapy</li> <li>Multimedia</li> <li>Music</li> <li>Music technology</li> </ul>
	<b>Education &amp; Learning</b> <ul style="list-style-type: none"> <li>E-learning and Educational Technology</li> <li>Workplace partnerships &amp; Experiential learning</li> </ul>

# BUSINESS & HUMANITIES

MSc in Marketing Practice	21
MSc in International Business	22
MA in Global Business Practice	23
MSc in Digital Marketing Strategy	24
MA in Human Resource Management	25
Master of Business Administration (MBA) in Strategy	26
MSc in Applied Accounting	27
MA in Integrative Psychotherapy	28
MA in Play Therapy	29





# Marketing Practice (M.Sc.)

CREDIT VALUE	COURSE FEE	APPLICATION
M.Sc.: 90 ECTS	EU Applicants: €5,500 Non-EU Applicants: €12,000	EU Applicants: Apply online at <a href="http://www.cit.ie/course/CRBMRKP9">www.cit.ie/course/CRBMRKP9</a> Closing date: 31st August 2020
FULL TIME	PART TIME	LOCATION
1 Year (3 Semesters, September to August)	N/A	CIT Bishopstown Campus

## Overview

The programme offers graduates a degree that will render them more employable by enhancing their ability to contribute to the real needs of the business community. The hybrid nature of the programme will turn Marketing Graduates into Marketing Practitioners with an array of action learning components; incorporating live assignments, specialised workshops, marketing strategy simulation and an industry-based marketing consultancy. There will also be a reflective journal completed throughout the year, detailing how and what the student has learned from the Masters experience.

This action learning based programme consists of a hybrid array of touch-points with business, facilitating learner engagement with a diverse range of marketing professionals. The programme also incorporates a suite of modules designed specifically to prepare the learner for careers in marketing practice.

The aim of this programme is to provide the learner with an advanced range of high level knowledge and skills in order to establish a more solid foundation for a successful career as a marketing professional.

## Delivery

### Full-time

No. of weeks per semester: 15

No. of timetable hours per week:

Semester 1: circa 16 hours

Semesters 2 & 3: circa 35 hours

Which days: Monday to Friday

Duration: 3 semesters

## Admission Requirements

Applicants typically must have a minimum entry requirement of H2.2 in a cognate Level 8 Degree (including at least 20 credits in Marketing). Candidates will be shortlisted and will be required to attend an interview.

Subject to availability, late applications may also be considered.

## Enquiries

Maurice Murphy  
Department of Marketing and  
International Business  
E: [maurice.murphy@cit.ie](mailto:maurice.murphy@cit.ie)  
T: +353 (0)21 433 5926

or

Conor Kelleher  
Department of Marketing and  
International Business  
E: [conor.kelleher@cit.ie](mailto:conor.kelleher@cit.ie)  
T: +353 (0)21 433 5925

## Modules

**All modules are worth 5 credits (ECTS) unless otherwise noted.**

### SEMESTER 1

Integrated Marketing Practice  
The Digital Message  
Strategic Marketing  
Contemporary Marketing Issues  
Relationship Management  
Business Case Analysis

### SEMESTER 2

Workplace Consultancy -  
24 weeks spanning Semester 2 & 3  
(40 ECTS)  
Marketing Strategy Simulation  
Online Business Effectiveness

### SEMESTER 3

Workplace Consultancy -  
24 weeks spanning Semester 2 & 3  
(40 ECTS)  
Reflective Learning Journal (10 ECTS)



# International Business (M.Sc.)

## CREDIT VALUE

M.Sc.: 90 ECTS

## COURSE FEE

EU Applicants: €5,500  
Non-EU Applicants: €12,000

## APPLICATION

EU Applicants: Apply online  
Full-time: [www.cit.ie/course/CRBIBUS9](http://www.cit.ie/course/CRBIBUS9)  
Part-time: [www.cit.ie/course/CRBINTB9](http://www.cit.ie/course/CRBINTB9)  
Closing date: 31st August 2020

## FULL TIME

1 Year  
(3 Semesters, September to August)

## PART TIME

2 Years  
(4 Semesters)

## LOCATION

CIT Bishopstown Campus

The programme is designed specifically for non-business graduates and provides opportunities to develop business knowledge on top of your primary degree.

## Overview

This programme is geared at providing non-business graduates with the skills required to develop and promote products and services in an international environment while furthering their business skills and knowledge. Students build upon their own discipline (science, engineering, computing etc.) to develop solid understanding of Business Development, Internationalisation and Innovation in an interesting educational environment. Students will expand their business knowledge and skills through simulation, guest speakers, and an international trip. Students will also undertake an industry consultancy project which will prepare them for opportunities in the workplace. The programme is an excellent opportunity for students who want to complement their degree with business skills.

The MSc in International Business is aimed at graduates who wish to build on their previous **non-business** related degree and want to develop their skills for career advancement. It is open to graduates from non-business programmes who want to expand their horizon when it comes to their career. The programme should also appeal to those interested in increasing their business acumen with a view to capitalising on their existing skills sets.

## Programme Highlights

The international Business Field Trip is an opportunity for immersion in non-Irish culture which serves to enhance and deepen the learning experience for students involved. The trip focuses on the skills required to develop business opportunities in new markets.

The **Seminar Series** module allows students the opportunity to draw upon their learning throughout the programme and to synthesise that in the context of some direct exposure to industry leaders.

The **Applied Business Consultancy Project** is a capstone module which brings together the learning from the programme which is applied to a business-set project.

## Delivery

### Full-Time

No of weeks per semester: 13

No of timetabled hours per week:  
Semester 1 (12 Hours)  
Semester 2 (12 Hours)  
Semester 3 (mainly independent learning)  
Some weeks will contain extra sessions to support independent learning.

Which days: Monday to Friday

Duration: 3 semesters

## Admission Requirements

- H2.2 in an Honours Degree in a non-cognate area. All areas where the specialism is not business, Marketing, Accounting/Finance or Business Information Systems will be considered
- Personal Statement must be provided by the applicant
- An interview may be held with certain candidates
- An IELTS of 6.5 (or equivalent) will be requested of non-EU applicants where deemed appropriate by the Head of Department

## Enquiries

Dr Pio Fenton  
Department of Marketing and International Business  
E: [pio.fenton@cit.ie](mailto:pio.fenton@cit.ie)  
T: +353 (0)21 433 5922

## Modules

**All modules are worth 5 credits (ECTS) unless otherwise noted.**

### SEMESTER 1

Strategic Thinking  
Global Marketing Management  
International Business Development (10 ECTS)  
Innovation Management & Creativity  
Financial Management & Systems

### SEMESTER 2

International Business Field Trip  
Sustainable Marketing Practice  
Seminar Series (International)  
Economics of Global Markets

### Electives

Customer Experience Design  
Technology Management in Global Business  
People Management Strategies  
Digital Environment  
Supply Chain Strategy

### SEMESTER 3

Business Environment Simulation (10 ECTS)  
Applied Consultancy Project (20 ECTS)

**PLEASE NOTE THAT PART-TIME DELIVERY IS OFFERED OVER 4 SEMESTERS**



# Global Business Practice (M.A.)

CREDIT VALUE	COURSE FEE	APPLICATION
M.A.: 90 ECTS	EU Applicants: €5,500 Non-EU Applicants: €12,000	EU Applicants: Apply online at <a href="http://www.cit.ie/course/CRBGLBP9">www.cit.ie/course/CRBGLBP9</a> Closing date: 31st August 2020
FULL TIME	PART TIME	LOCATION
3 Semesters	N/A	CIT Bishopstown Campus

## Overview

The MA in Global Business Practice emphasises the development of skills relating to International Business with a capstone international placement. The programme is aimed at those with existing business degrees and develops knowledge and insight relating to areas that are of particular importance for businesses operating globally. This can include small, medium and large companies who may be involved in the movement and development of goods, service or labour across multiple territories. Skills and knowledge developed relate to operations management, supply chain and logistics, procurement as well as broader themes like strategy and innovation which also underpin success in global business.

The programme has three strands, geared at developing a graduate that will be ready to gain employment in roles where international business skills and knowledge can be put to immediate and practical usage.

### Traditional Platform (Semester 1 – September to January)

This focuses on the global environment putting specific focus on contemporary issues in the international landscape. The provision of these modules that act as critical immersions in areas including Global Competitive Strategies, Financial Interpretation, Business Relationship Development, International Business Negotiation, Innovation Management & Creativity and Operations Strategy will be through a delivery mode that emphasises traditional delivery albeit through interesting pedagogical approaches.

### Accelerated and Intensive Platform (Semester 2 January to March)

During January, February and March learners will have the opportunity to

undertake specifically tailored modules that will be delivered in either intensive or accelerated modes.

### Placement (April to August)

The final stage of the programme will provide students with the opportunity to apply their knowledge and skills to real world initiatives through placement in an international business or a business with a strong business orientation. This will be of significant duration and will be targeted at overseas partners though suitable placements may also be approved within Ireland.

## Admissions Requirements

This programme is geared at business students. As students will emanate from various business areas the following entry criteria normally need to be met:

1. A H2.2 (or equivalent) in an Honours Degree in a business area.
2. A Personal Statement must be provided by the applicant.
3. An interview may be held with candidates.
4. An IELTS of 6.5 (or equivalent) will be requested of students where deemed appropriate by the HOD.

## Career Opportunities

It is envisaged that graduates will play significant roles in the various aspects of the export orientation of Irish and multinational businesses. The majority of students who have undertaken placements in companies have ended up working for that company after the programme. This will be supported by an understanding of pertinent business knowledge relating to this area with in-depth understanding of areas such as trade policy, negotiation, financial interpretation and operations and logistics. There is an articulated demand within Irish businesses for graduates, who understand what it means to be

truly global, who also have the skills and knowledge required to play an active part in an ever more competitive business environment.

We expect that graduates of this programme would be suited to graduate programmes of large multinationals and that beyond this the graduates would be ready for roles (within large and small companies) including indigenous Irish companies.

## Modules

**All modules are worth 5 credits (ECTS) unless otherwise noted.**

### STAGE 1/SEMESTER 1 (TRADITIONAL DELIVERY)

International Business Negotiation  
Performance & Data Evaluation  
Business Relationship Management  
Operations Strategy  
Global Competitive Strategies  
Innovation Theory and Practice

### STAGE 1/SEMESTER 2 (INTENSIVE OR ACCELERATED)

Seminar Series (International)  
Business Environment Simulation (10 ECTS)  
Trade Policy & Regulation  
International Business Field Trip (Brussels)  
Purchasing & Logistics

### STAGE 1/SEMESTER 3

Placement (30 ECTS)

## Enquiries

Dr Claudia Wagner  
Department of Marketing and International Business  
E: [claudia.wagner@cit.ie](mailto:claudia.wagner@cit.ie)  
T: +353 (0)21 433 5894



# Digital Marketing Strategy (M.Sc.)

CREDIT VALUE	COURSE FEE	APPLICATION
MSc.: 90 ECTS	EU Applicants: €7,500 payable over 2 years Non-EU Applicants: €12,000	EU Applicants: Apply online at <a href="http://www.cit.ie/course/CRBDMAS9">www.cit.ie/course/CRBDMAS9</a> Closing date: 31st August 2020
FULL TIME	PART TIME	LOCATION
1 year (3 semesters)	This programme is offered online and on-campus part time mode	CIT Bishopstown Campus

## Overview

Digital Marketing allows companies to connect with and understand their customers in the newest and most exciting of ways. It can be thought of as a set of strategies and tools that, due to their reach and measurability, offers a vibrant complement to traditional marketing.

Over the last few years, more and more companies have shifted their Marketing Budgets towards Digital Marketing. With this trend set to continue, and an ever-widening set of tools available, CIT offers an innovative Masters in Digital Marketing Strategy programme.

CIT has developed a strong track record in providing short Digital Marketing programmes over the last few years and has found the level of expertise and insight developed through such programmes to be unparalleled.

## Structure

The Masters in Digital Marketing Strategy is aimed at those working in traditional and digital marketing or those aspiring towards a senior position that requires a solid foundation in multiple aspects of Digital Marketing. Progress through the programme is designed to carefully develop essential skills to a point of expertise in the context of an overall strategic perspective.

CIT's panel of lecturers has substantial commercial experience, and is drawn from a range of local, national and international companies that lead the way in digital marketing. This innovative Masters programme will deliver students who are at the forefront of knowledge pertaining to digital marketing strategy and digital leadership.

The course is delivered at CIT's Bishopstown campus. All assessment is by project work, reports and similar mechanisms; there are no final terminal exams.

## Delivery

### Full Time

No of weeks per semester: 13  
No of timetabled hours per week: 12  
Which days: Monday to Friday  
Duration: 1 Year (3 semesters)

### Part Time

**Semester 1:** 4 Saturdays and 15 Tuesday evenings (Semester 1 comprises the Certificate in Digital Marketing)

**Semester 2:** 6 Saturdays and 15 Wednesday evenings

**Semester 3:** 6 Saturdays and 15 Wednesday evenings

**Semester 4:** Independent Research activity with Supervision support from CIT

## Admission requirements

- Candidates ideally should have attained at least a H2.2 degree in a cognate area (an area related to business, media or visual communications).
- Degree-holders from non-cognate areas will be considered provided that these candidates can demonstrate significant relevant industrial experience.

## Enquiries

Vivienne Griffin  
Department of Marketing & International Business  
E: [vivienne.griffin@cit.ie](mailto:vivienne.griffin@cit.ie)  
T: +353 (0)21 432 6120

## Modules

**All modules are worth 5 credits (ECTS) unless otherwise noted.**

### SEMESTER 1

Digital Marketing Environment  
Strategy for Digital Marketing  
Social Media Advertising  
Website Optimisation & Analytics  
Professional Development for Marketing  
Action Research Methods

### SEMESTER 2

Digital Strategy Development  
Digital Advertising & Analytics  
Integrated Strategy & Planning  
SEO & Analytics

### Electives

Ecommerce & Goal-Driven Sites  
Digital Brand Development  
The Digital Consume

### SEMESTER 3

Applied Project Digital Marketing (30 ECTS)





# Human Resource Management (M.A.)

CREDIT VALUE	COURSE FEE	APPLICATION
M.A.: 90 ECTS	EU Applicants Full Time: €5,500 EU Applicants Part Time: €5,900 Non-EU Applicants: €12,000	EU Applicants: Apply online at <a href="http://www.cit.ie/course/CRBHRMN9">www.cit.ie/course/CRBHRMN9</a> Closing date: 31st August 2020
FULL TIME	PART TIME	LOCATION
1 Year	2 Years (4 Semesters, September to May)	CIT Bishopstown Campus

## Overview

This programme allows graduates to apply for advanced level membership of Chartered Institute of Personnel and Development, CIPD, and will aid them as their career progresses to strategic roles in organisations.

The programme is designed to expose students to current issues in the Human Resource Management domain at a strategic level. This Masters programme has been designed in consultation with industry to respond to changes that have taken place in the HR area. It is aimed at professionals in the Human Resource discipline who wish to further their career and enhance their skillset.

## Delivery

### Part-time

No. of weeks per semester: 15

No. of timetable hours per week: 8

Which days: Mondays & Wednesdays (evenings). Part time students are also required to attend CIT on 4 Saturdays per semester.

Duration: 4 semesters.

### Full-time

No. of weeks per semester: 15

No. of timetable hours per week: circa 18

Which days: Monday - Friday

Duration: 2 semesters plus Research Dissertation

## Admission Requirements

Applications are assessed on a first come first served basis.

Bachelor of Arts (Honours) in Human Resource Management (Level 8) at grade H2.2 or higher. Graduates of cognate Honours programmes who have attained HR experience may also be eligible. The programme is offered on a modular basis and requires learners to attain 90 credits.

## Enquiries

Dr Deirdre O'Donovan  
Department of Organisation and Professional Development  
E: [deirdre.odonovan@cit.ie](mailto:deirdre.odonovan@cit.ie)  
T: +353 (0)21 433 5907

## Modules

**All modules are worth 5 credits (ECTS) unless otherwise noted.**

### SEMESTER 1

International Corporate Strategy  
Professional Employment Law  
HRM in Context  
Coaching and Mentoring (4 Saturdays)

### SEMESTER 2

Applied Corporate Strategy  
Employee Engagement  
Leading, Managing & Developing  
Training & Knowledge Management

### SEMESTER 3

Research Methods  
Reward & Incentive Management  
Performance Management  
Sourcing & Testing

### SEMESTER 4

Research Dissertation (30 ECTS)

# Master of Business Administration (MBA) in Strategy

CREDIT VALUE	COURSE FEE	APPLICATION
MBA: 90 ECTS	EU Applicants: €12,500	Apply online at <a href="http://www.cit.ie/course/CRBSTRA9">www.cit.ie/course/CRBSTRA9</a> Closing date: 31st August 2020
FULL TIME	PART TIME	LOCATION
N/A	2 Years (4 Semesters, September to September)	CIT Bishopstown Campus

## How will I benefit?

Individual professional and personal development.

The MBA programme will allow you to develop your interpersonal, conceptual and decision making skills which will give you enhanced management and leadership ability, confidence and critical self-awareness.

The MBA will give you the required skills and abilities to assist you in navigating your chosen career path.

Your organisation will benefit from you acquiring new skills and confidence and will bring an added value to your workplace and colleagues.

## Overview

The aim of the MBA in Strategy is to enable learners to develop their leadership and strategic management skills, thus raising their individual performance and assisting their organisations achieve success.

The MBA enables the learner, as a professional, to review their leadership and management style and identify how they can improve upon same to increase their effectiveness at a senior level in the workplace. The programme allows learners to develop an appreciation of the interconnectedness of all aspects of the organisation, and an appreciation of the role each function must play in delivering on organisational goals.

For most learners, moving to a strategic role in their organisation requires an understanding of functions outside of their existing professional competence together with an expert command of strategic management and thinking.

## Delivery

### Part-time

No. of weeks per semester: 15

No. of timetable hours per week: circa 10

Which days:

Wednesdays: 6pm - 10pm

Fridays: 3.00pm - 9.00pm

Duration: 4 semesters

## Admission Requirements

Applications are assessed on a first come first served basis.

Applicants who have a minimum of an Honours Bachelor of Business or cognate degree (Level 8) or cognate discipline (H2.2) or an approved equivalent qualification are eligible to apply for entry to the programme.

Subject to availability, late applications may also be considered.

## Enquiries

John Meyler  
Department of Organisation and Professional Development  
E: [john.meyler@cit.ie](mailto:john.meyler@cit.ie)  
T: +353 (0)21 433 5335

Dr Angela Wright  
Department of Organisation and Professional Development  
E: [angela.wright@cit.ie](mailto:angela.wright@cit.ie)  
T: +353 (0)21 433 5908

## Modules

**All modules are worth 5 credits (ECTS) unless otherwise noted.**

### SEMESTER 1

Research Methods  
Exploring Corporate Strategy (10 ECTS)  
Applied Business Finance  
Leadership & Organisational Behaviour

### SEMESTER 2

Economics of Global Markets  
Global Business Strategy (10 ECTS)  
Contemporary Issues in Marketing  
IT & Analytics for Business

### SEMESTER 3

International Business Trip  
(duration 5 - 7 days)

### Electives – Choose 1

Operations Strategy  
Innovation & Creativity  
Organisational Change Management  
Strategic Corporate Finance  
Managing Creative Skills for the Service Sector

### SEMESTER 4

Research Dissertation (30 ECTS)

# Applied Accounting (M.Sc.)

CREDIT VALUE	COURSE FEE	APPLICATION
M.Sc.: 90 ECTS	€5,000* per year	Apply online at <a href="http://www.cit.ie/course/CRBAACC9">www.cit.ie/course/CRBAACC9</a> Closing date: 31st August 2020
FULL TIME	PART TIME	LOCATION
N/A	2 Years (4 Semesters)	CIT Bishopstown Campus

**\*NB For students pursuing the CPA qualification and Masters programme, An annual payment of €500 to CPA Ireland will apply. This fee will cover, exemptions, student membership of CPA Ireland and all associated exams.**

## Overview

The MSc in Applied Accounting takes students through a combination of taught modules, self-directed learning and workbased learning, achieving a level of advanced understanding and practical application in accounting. Upon successful completion of the programme, graduates will be eligible for the award of MSc in Applied Accounting. The students will have one further year of training with their employer, after which they will be eligible to apply for membership of CPA Ireland.

## Delivery

### Part-time

No. of weeks per semester: 15

No. of timetable hours per week: circa 12

Which days: Monday & Thursday (evenings), and occasional Saturdays

Duration: 4 semesters

## Admission Requirements

The typical candidate will have a Level 8 Honours Degree in Accounting at Grade H2.2 or above, along with exemptions upto and including Professional 1 from CPA Ireland. An international student must also have an IELTS of 6.5 or above to be considered for entry to this Masters. Candidates that do not have the appropriate undergraduate degree may still be considered for admission to this Masters under exceptional circumstances if, for example, they have secured the Professional 1 CPA Ireland suite of exams and have appropriate work experience.

## Institute Information

The Institute of Certified Public Accountants in Ireland  
17 Harcourt Street, Dublin 2  
T: +353 (0)1 425 1000  
W: [www.cpaireland.ie](http://www.cpaireland.ie)

## Registration with CPA

1st December 2019 for April 2020 Exams

1st June 2020 for August 2020 Exams

## Exam Registration Closing Date(s)

1st March 2020 for April 2020 Exams

1st August 2020 for August 2020 Exams

## Awarding Body

Institute of Certified Public Accountants in Ireland  
Cork Institute of Technology

## CPA Institute contact details

### Exams

Arran Feery  
T: +353 (0)1 425 1021  
E: [afeery@cpaireland.ie](mailto:afeery@cpaireland.ie)

### Registration for new students

Sinead O'Donovan  
T: +353 (0)1 425 1016  
E: [sodonovan@cpaireland.ie](mailto:sodonovan@cpaireland.ie)

### Exemptions

Lisa Kelly  
T: +353 (0)1 425 1024  
E: [LKelly@cpaireland.ie](mailto:LKelly@cpaireland.ie)

## Modules

**All modules are worth 5 credits (ECTS) unless otherwise noted.**

### STAGE1/SEMESTER 1

Strategy and Leadership (CPA) (10 ECTS) (Part 1 of 2)  
Strategic Corporate Finance  
Communications & Professional Development  
Advanced Corp. Reporting (CPA) (10 ECTS) (Part 1 of 2)

### STAGE 1/SEMESTER 2

Accounting Research Methods  
Strategy and Leadership (CPA) (Part 2 of 2)  
Advanced Corporate Reporting (CPA) (Part 2 of 2)

### STAGE 2/SEMESTER 1

Audit Practices (CPA) (10 ECTS) (Part 1 of 2)  
Advanced Taxation (CPA) (10 ECTS) (Part 1 of 2)  
IT and Analytics for Business  
Work-based Learning (CPA) (10 ECTS) (Part 1 of 2)

### STAGE 2/SEMESTER 2

Accounting Inquiry  
Audit Practices (CPA) (Part 2 of 2)  
Advanced Taxation (CPA) (Part 2 of 2)  
Work-based Learning (CPA) (Part 2 of 2)

## Enquiries

Don Crowley  
Department of Professional & Organisational Development  
T: +353 (0)21 433 5900  
E: [opd@cit.ie](mailto:opd@cit.ie)

# Integrative Psychotherapy (M.A.)

CREDIT VALUE	COURSE FEE	APPLICATION
M.A.: 90 ECTS	To be confirmed for intake September 2021	Apply online at <a href="http://www.cit.ie/course/CRHINTP9">www.cit.ie/course/CRHINTP9</a> Closing date: 3rd May
FULL TIME	PART TIME	LOCATION
N/A	See below	CIT Bishopstown Campus

This programme is run over a two year cycle (next intake is September 2021).

## Accreditation

The process of establishing training standards to prepare for the statutory registration of Psychotherapists in Ireland is continuing.

The present overall training programme at CIT combining the Bachelor of Arts (Honours) in Counselling and Psychotherapy, two years post-qualifying supervised clinical practice and the MA in Integrative Psychotherapy, represents the best interpretation of the requirements as they currently prevail.

## Overview

The programme aims to equip practitioners with the advanced knowledge and clinical capability of best practice within the Psychotherapy profession.

### Client work and supervision:

Students will be required to carry out 100 hours of Counselling work with clients during each year of the course. They will be required to obtain supervision for this work from their own Supervisor. Additionally, during Year 1 they will participate in monthly group supervision arranged by the course. Payment for individual and group supervision will be made directly by students and is not included in the course fee.

### Personal Therapy:

Students will be in weekly personal therapy throughout the course. The cost of this is separate to the course and is arranged directly between the student and the therapist.

## Delivery

The programme has 90 credits and will be offered as follows:

**Year 1** (60 Credits) is a taught year where students will attend at College and supervision, thus completing the taught modules of the course. The regular

sessions will be held on a combination of weekday evenings (generally 6.30pm to 9.30pm) and on Saturdays and Sundays.

**Year 2** (30 Credits) will involve a programme of directed/supervised learning where students will research and write the Reflective Practitioner dissertation. During this year they will also carry out their Mental Health Placement.

## Admission Requirements

Applicants must

- Have successfully completed the Bachelor of Art (Honours) in Counselling or Psychotherapy (minimum H2.2) or an equivalent\* professional training in Counselling and Psychotherapy that satisfies the training requirements for professional accreditation.
- Have completed two years post-qualifying supervised clinical practice with a minimum of 150 hours of clinical practice which is verified by an accredited supervisor.
- Be assessed through interview.
- Submit two written references (for applicants who have not already been on a prior stage of the course).

\*Where an applicant has not completed the Bachelor of Arts (Honours) in Counselling or Psychotherapy, equivalence is assessed through CIT's formal Recognition of Prior Learning ([www.cit.ie/rpl](http://www.cit.ie/rpl)). This involves applicants preparing a portfolio in which they would demonstrate how they have achieved the learning outcome of the modules in the BA (Honours) in Counselling and Psychotherapy as well as the two years post-qualifying supervised clinical practice.

## Early Assessment

Because of the clinical placement component of this programme, it is a condition of entry that all successful applicants who gain a place on the course will be subject to the National Vetting Bureau (NVB) procedure carried out by the NVB facilitator at CIT. Offers of a place on this programme will be provisional and contingent on the applicant's satisfactory completion of CIT's NVB procedure. Visit [www.cit.ie/gardavetting](http://www.cit.ie/gardavetting)

## Modules

**All modules are worth 5 credits (ECTS) unless otherwise noted.**

### SEMESTER 1

Developmental Theory & Adult Adaptations  
Clinical Assessment & Case Formulation (10 ECTS)  
Personal & Relational Process (10 ECTS)  
Supervised Psychotherapy Practice

### SEMESTER 2

Trauma, Dissociation and their treatment  
Clinical Process of Psychotherapy  
Personal and Clinical Integration (10 ECTS)  
Practitioner Research Methods  
Supervised Psychotherapy Practice

### SEMESTER 3

Mental Health Placement  
Reflective Practitioner Dissertation (25 ECTS)

## Enquiries

Helen Moylan  
Department of Applied Social Studies  
E: [helen.moylan@cit.ie](mailto:helen.moylan@cit.ie)



# Play Therapy (M.A.)

CREDIT VALUE	COURSE FEE	APPLICATION
M.A.: 90 ECTS P.Grad.Dip.: 60 ECTS	EU Applicants: €6,900 (€2,300 per annum) Additional costing is outlined below.	Apply online at <a href="http://www.cit.ie/course/CRHPLTH9">www.cit.ie/course/CRHPLTH9</a>
FULL TIME	PART TIME	LOCATION
N/A	3 Years	CIT Bishopstown Campus

## Additional Costing

1. Clinical Supervision (from CIT approved supervisors) is not included in the course fees;
2. Personal Therapy - students are required to undertake approximately 50 sessions at their own expense
3. Setting up a playroom/rent a playroom also has to be considered.

## Overview

This programme is a postgraduate clinical training in Play Therapy. It aims to equip practitioners with the advanced knowledge and clinical capability that would match international standards of best practice within the Play Therapy profession. The key areas are personal therapy and personal development.

## Admission Requirements

Applicants must hold a Level 8 Honours degree (H2.2) or higher, in one of the following areas: Counselling/ Psychotherapy, Early Years Education, Occupational Therapy, Primary Education, Psychiatry, Psychology, Psychiatric Nursing, Social Care, Social Work, Special Needs Education or a cognate discipline.

Applicants must be aged 23 years old at time of application and have at minimum of 2 years post qualifying experience of working with children. Applicants will be required to attend an interview.

N.B. All applicants who enrol on this programme will be required to undergo Garda vetting.

## How to Apply

Applicants will be required to apply online at the beginning of 2020, with a view to attend for interview in April/ May 2020. Applicants must include a Personal Statement, detailing why they are choosing this career with their online application. Please note shortlisting for interview will be based on the online application form, personal statements, uploading of qualifications and work experience.

## Delivery

### Part-time

No of weeks: 26 per annum

Duration: 3 years

The course lectures are delivered on a part time basis on Saturdays. However, 1 day a week is also required for placement (this must be during Social Work Office hours to facilitate child protection reporting). Students also have to consider time involved in Personal Therapy and academic study for course assignments. Students may be required to attend block residential weekends (Friday, Saturday, and Sunday).

Years 1 and 2 (60 credits) will include a clinical training in Play Therapy. Students will study modules which will be experiential and theoretical. They will undertake placements in both years and will require external supervision from approved supervisors, to be paid separately from the course fees.

On successful completion of the taught elements, students will be awarded a Postgraduate Diploma in Play Therapy, unless they proceed to Year 3.

Year 3 (30 credits) The MA in Play Therapy is awarded to successful candidates who complete a module in research skills and a research dissertation.

## Modules

**All modules are worth 5 credits (ECTS) unless otherwise noted.**

### STAGE 1/SEMESTER 1

Child Development: Theory & Observation  
Play Therapy Practice Placement (10 ECTS)

### STAGE 1/SEMESTER 2

Play Therapy Theory  
Play and Creative Expression  
Play Therapy Practice Placement (10 ECTS)

### STAGE 2/SEMESTER 1

Interpersonal Neurobiology and Therapy  
Family Contexts in Play Therapy  
Advanced Play Therapy Work Practice (10 ECTS)

### Stage 2/Semester 2

Sand and Art Therapy  
Play Therapy Processes  
Advanced Play Therapy Work Practice (10 ECTS)

### STAGE 3/SEMESTER 1

Play Therapy Research Methods (10 ECTS)

### Stage 3/Semester 2

Research Dissertation (20 ECTS)

## Enquiries

Karen O'Connor  
Department of Applied Social Studies  
E: [karen.oconnor@cit.ie](mailto:karen.oconnor@cit.ie)  
T: +353 (0)21 433 6155

# ENGINEERING

MEng in Civil Engineering (Environment and Energy)	31
MEng in Structural Engineering	32
MEng in Chemical & Biopharmaceutical Engineering	33
M.Arch (Architecture)	34



# Civil Engineering (Environment and Energy) (M.Eng.)

## CREDIT VALUE

M.Eng.: 90 ECTS;  
P.Grad.Dip.: 60 ECTS

## COURSE FEE

Full time: EU Applicants €5,000  
Part Time: EU Applicants €7,000  
Non-EU Applicants: €12,000

## APPLICATION

EU Applicants: Apply online at  
[www.cit.ie/course/CRCENEN9](http://www.cit.ie/course/CRCENEN9)  
Closing date: 31st May 2020

## FULL TIME

For information, please visit  
[www.cit.ie/cse](http://www.cit.ie/cse)

## PART TIME

Typically 2 Years (5 Semesters)

CIT Bishopstown Campus

## Overview

This programme aims to develop advanced analytical, design, assessment, appraisal and research skills in Civil Engineering in the specialist areas of environmental and energy engineering. Graduates will be well equipped to meet the challenges of the modern Civil Engineering based environmental and energy engineering industries, providing, protecting and enhancing the natural environment and the related physical infrastructure that underpins society; in this context a broad range of environmental and energy engineering topics are addressed from the local level to the global scale. The programme content seeks to reflect current and likely future practice and trends in environmental and energy engineering analysis, design, and assessment.

The programme of study is designed to progress your qualifications in the following ways:

- Deepen your technical knowledge, skills and competences in the specialised field of Environmental and Energy Engineering;
- Develop your ability to carry out in depth research in a chosen field of Engineering, to draw conclusions from the research and present research findings;
- Broaden your knowledge in other areas such as Sustainability, Asset and Project Management.

**The programme is fully accredited by Engineers Ireland as satisfying the new educational standard for the title Chartered Engineer.**

## Delivery

### Full-time

For information, please visit  
[www.cit.ie/cse](http://www.cit.ie/cse)

No. of weeks per semester: 17

No. of timetable hours per week: circa.  
16 hours per week

Which days:

Full-time: Monday to Friday  
Part-time: 1 evening per week and a Friday afternoon

Duration: 3 semesters

Students who are available to attend part-time by day may take modules on a phased basis and achieve the programme qualification over a number of academic years, typically 2 years.

## Admission Requirements

Applicants should hold a minimum of a Second Class Honours Grade 2 in a professionally accredited Level 8 Honours Degree Programme in Civil Engineering or a cognate discipline.

Equivalent recognition may be given through the Recognition of Prior Learning (RPL) process on an individual case-by-case basis to candidates who have not achieved this academic standard but who can demonstrate significant relevant professional experience in the discipline of Civil, Environmental or Energy Engineering ([www.cit.ie/rpl](http://www.cit.ie/rpl)).

## Enquiries

Leonard O'Driscoll  
Department of Civil, Structural & Environmental Engineering  
E: [leonard.odriscoll@cit.ie](mailto:leonard.odriscoll@cit.ie)  
T: +353 (0)21 432 6563

## Modules

**All modules are worth 5 credits (ECTS) unless otherwise noted.**

The elective modules afford the learner the opportunity to broaden his/her skills set in other disciplines or to deepen his/her skills set in environmental and energy engineering. The elective modules offered in any given year are delivered subject to demand and resource availability.

### SEMESTER 1

Sustainability in Engineering  
Energy Source Analysis  
Advanced Hydro & Flood Control  
Engineering Research Skills  
Ocean Energy Conversion

#### Electives

Advanced Geotechnical Engineering  
Computational Solid Modelling  
Contract Admin/Dispute Resolve  
Strategic Business Management  
Fire Safety Engineering

### SEMESTER 2

Environmental and Energy Engineering Infrastructure  
Biofuel and Biomass Technology  
Project Development  
Advanced Municipal Wastewater Treatment  
Advanced Water Engineering

#### Electives

Infrastructure Asset Management  
Engineering Project Management  
Environmental Management  
Managing Innovation  
Leadership & Change Management  
Computational Fluid Dynamics  
Building Regulatory Engineering

### SEMESTER 3

Project Realisation (30 ECTS)



# Structural Engineering (M.Eng.)

CREDIT VALUE	COURSE FEE	APPLICATION
M.Eng.: 90 ECTS	Full-time: EU Applicants €5,000 Part Time: EU Applicants €7,000 Non-EU Applicants: €12,000	EU Applicants: Apply online at <a href="http://www.cit.ie/course/CRCSTRU9">www.cit.ie/course/CRCSTRU9</a> Closing date: 31st May 2020
FULL TIME	PART TIME	LOCATION
For information, please visit <a href="http://www.cit.ie/cse">www.cit.ie/cse</a>	Typically 2 Years (5 Semesters)	CIT Bishopstown Campus

## Overview

The programme involves a variety of delivery modes, including classroom based lectures, individual and group project work, tutorials, seminars and presentations by visiting experts. A Research Dissertation is completed by each student during Semester 3.

The programme of study is designed to progress your qualifications in the following ways:

- Deepen your technical knowledge, skills and competences in the specialised field of Structural Engineering
- Prepare you to undertake the Institution of Structural Engineers Professional Practice Examinations by developing your structural analysis and design skills to an appropriate level
- Extend your educational qualifications to a level required for Chartered Engineer status
- Develop your ability to carry out in depth research in a chosen field of Engineering, to draw conclusions from the research and present research findings
- Broaden your knowledge in other areas such as Sustainability, Management, and Business

**The programme is fully accredited by Engineers Ireland as satisfying the new educational standard for the title Chartered Engineer.**

## Delivery

For information, please visit [www.cit.ie/cse](http://www.cit.ie/cse)

No. of weeks per semester: 17

No. of timetable hours per week: circa. 16 hours per week

Which days:

Full-time: Monday to Friday

Part-time: 1 evening per week and a Friday afternoon

Duration: 3 semesters

Students who are available to attend part-time by day may take modules on a phased basis and achieve the programme qualification over a number of academic years, typically 2 years.

## Admission Requirements

Applicants should hold a minimum of a Second Class Honours Grade 2 in a professionally accredited Level 8 Honours Degree Programme in Civil or Structural Engineering.

Equivalent recognition may be given through the Recognition of Prior Learning (RPL) process on an individual case-by-case basis to candidates who have not achieved this academic standard but who can demonstrate significant relevant professional experience in the discipline of Structural Engineering ([www.cit.ie/rpl](http://www.cit.ie/rpl)).

## Enquiries

John Justin Murphy  
Department of Civil, Structural & Environmental Engineering  
E: [johnjustin.murphy@cit.ie](mailto:johnjustin.murphy@cit.ie)  
T: +353 (0)21 432 6741

## Modules

**All modules are worth 5 credits (ECTS) unless otherwise noted.**

The elective modules afford the learner the opportunity to broaden his/her skills set in other disciplines or to deepen his/her skills set in structural engineering. The elective modules offered in any given year are delivered subject to demand and resource availability.

### SEMESTER 1

Advanced Structural Design Office (10 ECTS)

Advanced Geotechnical Engineering  
Computational Solid Modelling  
Engineering Research Skills  
Sustainability in Engineering

### SEMESTER 2

Structural Engineering  
Bridge Engineering  
Infrastructure/Special Structures  
Project Development

#### Electives

Fire Safety Engineering  
Engineering Project Management  
Infrastructure Asset Management  
Prestressed Concrete and Masonry Design  
Advanced Hydro & Flood Control  
Advanced Water Engineering  
Advanced Municipal Wastewater Treatment  
Computational Fluid Dynamics  
Strategic Business Management  
Managing Innovation  
Leadership & Change Management

### SEMESTER 3

Project Realisation (30 ECTS)





# Chemical & Biopharmaceutical Engineering (M.Eng.)

CREDIT VALUE	COURSE FEE	APPLICATION
M.Eng.: 90 ECTS	Full-time: EU Applicants €5,000 Part Time: EU Applicants €7,000 Non-EU Applicants: €12,000	EU Applicants: Apply online at <a href="http://www.cit.ie/course/CRECHBI9">www.cit.ie/course/CRECHBI9</a> Closing date: 31st May 2020
FULL TIME	PART TIME	LOCATION
1 Year (3 Semesters, September to August)	3 Years (9 Semesters, September to August)	CIT Bishopstown Campus

## Overview

This programme aims to develop advanced analytical, design and research skills in Chemical Engineering with an industrial focus. Postgraduate students will undertake the final research element of this Masters programme in a host company or with their current employer. This will provide the researcher with an insight into the commercial aspects of engineering research and innovation and the opportunity to contribute to the development of the latest products and techniques.

Graduates of the programme will be well equipped to respond to the needs of the high technology industries particularly those with a focus on Research & Development, and product or process innovation.

## Delivery

### Full-time

No. of weeks per semester: 13  
No. of timetable hours per week: 15  
Which days: Variable (usually includes Friday afternoon)  
Duration: 3 semesters

### Part-time

No. of week per semester: 13  
No. of timetable hours per week: circa 6 - 9  
Which days: Variable (usually includes Friday afternoon)  
Duration: 9 semesters

## Admission Requirements

Applicants must have achieved a minimum of Second Class Honours in a Level 8 Honours Bachelor Programme in Chemical and Biopharmaceutical Engineering or equivalent.

Equivalent recognition may be given through the Recognition of Prior Learning (RPL) process on an individual case-by-case basis to candidates who have not achieved this academic standard but who can demonstrate significant relevant professional experience in the discipline of Chemical and Biopharmaceutical Engineering. For more information, please visit [www.cit.ie/rpl](http://www.cit.ie/rpl).

## Enquiries

Dr Róisín Foley  
Department of Process, Energy and Transport Engineering,  
E: [roisin.foley@cit.ie](mailto:roisin.foley@cit.ie)  
T: +353 (0)21 432 6224

## Modules

### All modules are worth 5 credits (ECTS) unless otherwise noted.

The elective modules afford the learner the opportunity to broaden his/her skills set in other disciplines or to deepen his/her skills set in a selected area or focus. The elective modules offered in any given year are delivered subject to demand and resource availability.

### SEMESTER 1

Emerging Technologies  
Engineering Research Skills  
Environment, Health & Safety  
Lean Sigma - Advanced Stats  
Industrial Heat and Power

### Elective

Sustainability in Engineering  
Strategic Business Management

### SEMESTER 2

Computational Fluid Dynamics  
Process Technology Transfer  
Industrial Control Systems  
Research Project Preparation (10 ECTS)

### Electives

Engineering Project Management  
Environmental Management

### SEMESTER 3

Project Realisation (30 ECTS)



# Architecture (M.Arch.)

(Joint programme with UCC)

CREDIT VALUE	COURSE FEE	APPLICATION
M.Arch: 90 ECTS	EU Applicants: €6,500* Non-EU Applicants: €22,000* *An additional fee of approximately €450 for an overseas field trip.	Application through PAC at: <a href="http://www.ucc.ie/en/ckr42/">www.ucc.ie/en/ckr42/</a> Application date: See dates at <a href="http://www.ucc.ie/en/study/postgrad/studytaught/dates/">www.ucc.ie/en/study/postgrad/studytaught/dates/</a>
FULL TIME	PART TIME	LOCATION
1 Year (3 Semesters, September to August)	N/A	Cork Centre for Architectural Education, Douglas Street, T12 AD7R Cork.

## Overview

The Master of Architecture Degree is a joint course between Cork Institute of Technology and University College Cork and operates as a full-time course extending over 12 months. The course has been designed to provide a qualification in architecture under Article 46 of Directive 2005/36/EC, the Building Control Act 2007 and is required by the Royal Institute of the Architects of Ireland (RIAI) before starting a minimum period of post-qualification, supervised practical experience in preparation for the RIAI Examination in Professional Practice, Registration, and/or RIAI Membership.

The established philosophy of CCAE is defined by a commitment to excellence in design, and consideration of wider cultural and theoretical phenomena. This framework is extended into the Masters Programme, where students will pose certain questions on the spaces and cities we inhabit, through a process of critical questioning and the dual acts of text and assemblage. Central to enabling these investigations and explorations - will be the series of prominent academics and architectural practitioners contributing to this programme. With their involvement, you will be encouraged to participate in a challenging academic environment. You will be required to address problematic and uncertain questions raised by changes in contemporary society, and aim to provide convincing new and innovative design propositions that suggest how we might operate in such evolving environments.

## Delivery

### Full-time

No. of weeks per semester: 13  
No. of timetable hours per week: 10 - 15  
Which days: Variable  
Duration: 3 semesters

## Admission Requirements

Candidates must meet the following criteria:

(a) Hold a BA/BSc (Hons) in Architecture, awarded on the equivalent of not less than 240 ECTS credits, from an accredited Architecture Programme, passed at Second Class Honours Grade II (2:2) or higher;

or

(b) Holders of BA/BSc (Hons) in Architecture with less than Second Class Honours Grade II (2:2) PLUS a period of work-based learning presented in the form of a portfolio of a standard equivalent to, or higher than, Second Class Honours Grade II (2:2).

**Note 1:** In addition to the minimum criteria, all applicants are required to submit a portfolio of architectural design work to be evaluated by at least two of the following: Centre Director, Associate Director and Programme Coordinator or their nominees who will assess the suitability of the candidate for the Cork Centre for Architectural Education (CCA) Master of Architecture Course. Candidates may be called for interview. Admission to the programme will be subject to the approval of the CCAE.

**Note 2:** Students with an Undergraduate Degree from an accredited Architecture Programme (comprising 3 years, or not less than 180 ECTS) can apply for Direct Entry to Year 4 of the BSc (Hons) in Architecture at CCAE.

Where they achieve an award of Second Class Honours Grade II (2:2) or above subsequently, they will qualify for entry to the M.Arch Course.

## Modules

### SEMESTER 1

AT6011: Design Research: Cultures and Context (5 ECTS)

AT6012: Design Research: Technology Transformations (5 ECTS)

AT6013: Design Research Studio: Investigation and Formation (20 ECTS)

### SEMESTER 2

AT6014: Design Project (30 ECTS)

### SEMESTER 3

AT6015: Exhibition Design and Implementation (15 ECTS)

AT6016: Documentation and Dissemination of Design and Design Process (15 ECTS)

## Enquiries

All correspondence by e-mail should be titled 'Master of Architecture query'.

Postal queries to:  
Jason M. O'Shaughnessy  
MArch Programme Coordinator  
Cork Centre for Architectural Education,  
Douglas Street,  
T12 AD7R, Cork.

E-mail: [jason.oshaughnessy@cit.ie](mailto:jason.oshaughnessy@cit.ie)  
Phone: +353 (0)21 420 5684

# SCIENCE & INFORMATICS

MSc in Data Science & Analytics	36
MSc in Cloud Computing	37
MSc in Cybersecurity	38
MSc in Information Design & Development	39
MSc in Software Architecture & Design	40
MSc in Artificial Intelligence	41



# Data Science & Analytics (M.Sc.)

## CREDIT VALUE

M.Sc: 90 ECTS

## COURSE FEE

EU Applicants: €6,500  
Non-EU Applicants: €12,000

## APPLICATION

EU Applicants: Apply online at [www.cit.ie/course/CRSDAAN9](http://www.cit.ie/course/CRSDAAN9)  
Closing date: 4th September 2020

## DURATION

Full-time: 3 semesters  
Part-time: N/A

## LOCATION

CIT Bishopstown Campus

## Overview

The growth in the field of Data Science has been enormous in recent years with a growing demand for practitioners in a variety of industries. With the ever increasing growth in data generation and collection, industries now rely heavily on appropriate analysis. Consequently, data science and analytics has become a core component of both the public and private sectors who seek a competitive advantage.

The MSc in Data Science and Analytics at CIT, a collaboration between the Department of Mathematics and the Department of Computer Science, aims to develop highly skilled and competent graduates in the rapidly expanding field of Data Science. This collaborative programme provides graduates with a thorough grounding in the theory of data science, while allowing graduates to become highly proficient in the technical and practical skills of a modern data scientist. The course will equip graduates with the skills to gather and store data, process data using advanced statistics and techniques such as machine and deep learning and deliver new insights and knowledge from the collected data.

The programme has been designed with industry experts to ensure that in the first two semesters graduates develop core skills in programming, database management, statistical modelling, time series analysis, machine learning, and data visualisation and interpretation of results. The industry based capstone project in Semester 3 is a key component of this MSc programme. The project allows the learner to apply the knowledge, skills and competences acquired in the taught modules to research and development applied to a real-world data science problem.

## Admission Requirements

- 2.1 in a Level 8 Honours degree
- Alternatively, graduates with a 2.2 Honours degree will be considered, subject to having three years relevant experience.
- The language of academic instruction as well as administration is English. Non-native speakers of English require a minimum IELTS score of 6.0 to be considered for entry into this postgraduate programme. Appropriate EFL training courses are offered by CIT to applicants who meet the academic programme entry requirements but who need to increase their proficiency in the English language.

## Enquiries

Dr David Goulding  
Department of Mathematics  
E: [mathematics@cit.ie](mailto:mathematics@cit.ie)  
T: +353 (0)21 433 6233

For more information visit [mathematics.cit.ie/datascience](http://mathematics.cit.ie/datascience)

## Careers

Graduates of this programme will be of high academic and practical standards having gained key knowledge, skills and competences in Data Science, Machine Learning, Statistics, and Computer Science. Graduates will experience first hand the application of their newly developed skills to solving real-life problems.

Our alumni have gone onto a wide variety of roles as data scientists, as well as other technical and leadership roles in high tech industries such as financial services, pharmaceuticals, IT, brewing, consulting, official statistics, retail analytics, data science banking, and many more.

## Modules

The full-time MSc in Data Science and Analytics will run over three semesters. Each semester accrues 30 credits.

The first semester consists of six taught modules (each five credits). The learner acquires a foundation in Data Science, Statistics and Computer Science, with the signature module DATA8001 Data Science and Analytics anchoring the other five modules of this semester.

### SEMESTER 1

Data Science and Analytics  
Introduction to R for Data Science  
Applied Statistics and Probability  
Scientific Programming in Python  
Mathematical Methods and Modelling  
Data Management Systems

The learner continues to pursue more advanced topics in the second semester with focus on the key skills needed to be a modern data scientist. Again, each module this semester earns five credits and includes a research methods module to prepare students for their final dissertation.

### SEMESTER 2

Statistical Data Analysis  
Data Analytics and Visualisation  
Distributed Data Management  
Time Series and Factor Analysis  
Applied Machine Learning  
Research Methods

### SEMESTER 3

The MSc learner undertakes one capstone project module (DATA9003 Research Project - Data Science) worth 30 credits.





# Cloud Computing (M.Sc.)

## CREDIT VALUE

M.Sc.: 60 ECTS

## ONLINE

Online over 4 Semesters

## COURSE FEE

€10,800  
(payment by instalments is an option)

## LOCATION

Online

## APPLICATION

Apply online at  
<https://cs.cit.ie/cloud>  
Closing date: 10th September 2020

## Overview

Cloud Computing refers to the practice of using a network of remote servers hosted on the Internet to store, manage, and process data, rather than a local server or a personal computer. The MSc in Cloud Computing programme was designed to equip graduates with the detailed knowledge, specialist architectural and technical skills required to design and implement cloud based solutions, and services.

The programme content seeks to reflect current and likely future practice in cloud planning and management, the design and management of virtual environments, data analytics, the consolidation of data centres, security techniques in multi-tenant virtualised environments and related areas that contribute to the building of both private and public cloud environments. CIT hosts its own private cloud infrastructure to support the delivery of modules giving students 24/7 access to state-of-the-art cloud computing labs. All lectures are delivered online by academic and industry experts.

This innovative master's programme was developed in conjunction with key industry stakeholders, such as EMC, VMWare and many other companies. The programme offers the opportunity to learn about cloud in the cloud. CIT hosts its own private cloud infrastructure to support the delivery of modules. Lectures are delivered online by industry and academic experts and are recorded for subsequent playback on any device.

Designed to address the widening practical and theoretical skills shortage in cloud computing the programme delivers content that follows best practice in industry. It has a strong applied emphasis which is supported by in-depth theoretical knowledge. The continuing trend of skills shortage in this area is predicted to increase the global demand for cloud computing graduates.

Graduates may also wish to continue to PhD level in this exciting field of study.

## Delivery

### Online

No. of weeks per semester: 13  
No. of timetable hours per week: 6  
Which days: Normally two nights a week  
Duration: 4 semesters

The MSc in Cloud Computing is taught online using Cloud based technologies, so students can learn about the cloud in the cloud. Learning technologies such as Canvas, Zoom and virtualised lab infrastructures are just some of the systems that are used to deliver this innovative programme. Lectures, which are delivered at night are streamed live over the Internet and recorded to facilitate easy playback for students. This offers great flexibility to students as they can access their lectures and labs anytime, anywhere on any device that has a Web browser. It is a testament to the online delivery platform in CIT that students can participate in the programme irrespective of their physical location or working status.

## Admission Requirements

Entry to the MSc in Cloud Computing will require a minimum of a Level 8 Honours Degree in Computing or in a cognate discipline. As this programme is designed specifically for computing professionals working in the IT industry only graduates with experience will gain direct entry into this programme.

## Enquiries

Dr Ruairi O'Reilly  
Department of Computer Science  
E: [ruairi.oreilly@cit.ie](mailto:ruairi.oreilly@cit.ie) or  
E: [cs@cit.ie](mailto:cs@cit.ie)  
T: +353 (0)21 432 6161  
W: <https://cs.cit.ie/cloud>

## Modules

The programme contains challenging and interesting modules delivered by lecturers who are experts in Cloud Computing. You will also be presented with opportunities to work on modern research case studies linked to the domain expertise of staff in the department. The programme places significant emphasis on student learning by doing. It adopts a practical, hands-on, approach to learning, where all modules are fully assessed using continuous assessment methods. There are no formal end of semester written examinations and this ensures that you will learn by doing from the first module to the last.

### SEMESTER 1 (AUTUMN - YEAR 1)

Managing Virtual Environments  
Cloud Strategy Plan & Management  
Scripting for System Automation  
Free Choice Module (Various)

### SEMESTER 2 (SPRING - YEAR 1)

Data Centre Networking  
Research Practice & Ethics  
Data Analytics  
Free Choice Module (Various)

### SEMESTER 3 (AUTUMN - YEAR 2)

Distributed Ledger Technology  
Cloud Storage Infrastructures

### SEMESTER 4 (SPRING - YEAR 2)

Research Project

Module descriptors can be viewed  
[www.cit.ie/course/CRKCLDC9](http://www.cit.ie/course/CRKCLDC9)  
Recognition of Prior Learning  
information is available at  
[www.cit.ie/rpl](http://www.cit.ie/rpl)



# Cybersecurity (M.Sc.)

CREDIT VALUE	COURSE FEE	APPLICATION
M.Sc.: 90 ECTS	Online delivery: €9,000 Full-time on Campus delivery: EU Applicants: €6,500. Non EU Applicants: €12,000	Visit: <a href="https://cs.cit.ie/security">https://cs.cit.ie/security</a> Closing date: 4th September 2020
FULL TIME	PART TIME	LOCATION
1 Year 3 Semesters	Also delivered online over 24 months	See below

## Overview

Cybersecurity can be defined as the protection of information and information systems from unauthorised access, use, disclosure, disruption, modification, or destruction in order to provide confidentiality, integrity, and availability.

Today, Cybersecurity is becoming a function of increasing importance for the continued operation of commercial entities. The increasing level of interconnectedness of information networks and the reliance of business models on this interconnectedness has resulted in a network currently (the Internet) that has over a yottabyte of information stored, much of which is unsecured. This continuing trend is predicted to strongly increase the importance of Cybersecurity within most multinational entities.

This programme is designed to produce graduates with advanced theoretical and practical skills in Cybersecurity and a demonstrated ability to perform research on topics related to this field of study.

This programme aims to fill the ever increasing skills gap in this area and delivers material that follows the most current practise. Upon successful completion of this programme the student will both understand and deploy the most advanced methods to protect information at rest, in transit, and at work.

## Delivery

### Part Time

Fully Online (Material and Assessments)  
No. of weeks per semester: 13  
Which days: Normally two nights a week

### Full Time

CIT Bishopstown Campus  
No. of weeks per semester: 13  
No. of timetable hours/week: 18  
Which days: Monday - Friday

The MSc in Cybersecurity part time offering is taught fully online and is designed specifically for computing professionals working in the IT industry. The modules are assessed by online continuous assessment. The programme is hands-on in nature and provides the learner with detailed working knowledge of the tools used in the field of Cybersecurity. Online lectures are delivered to students 2 evenings per week. Lectures are streamed live over the Internet and recorded to facilitate easy playback for learners.

The full time offering is taught on the Bishopstown Campus, and some elective modules may be delivered online.

## Admission Requirements

Entry to the MSc in Cybersecurity will require a minimum of a Level 8 Honours Degree in Computing or in a cognate discipline.

Applicants who do not hold a Level 8 degree but have significant industrial experience will be considered on a case by case basis.

## Enquiries

Vincent Ryan  
Department of Computer Science  
E: [vincent.ryan@cit.ie](mailto:vincent.ryan@cit.ie) or  
E: [cs@cit.ie](mailto:cs@cit.ie)  
T: +353 (0)21 433 5112  
W: <https://cs.cit.ie/security>

## Modules

The programme places significant emphasis on student learning by doing. It adopts a practical, hands-on, approach to learning, where all modules are fully assessed using continuous assessment methods. There are no formal end of semester written examinations and this ensures that you will learn by doing from the first module to the last.

### SEMESTER 1 (AUTUMN)

Network Security & Forensics (10 ECTS)  
Incident Response & Forensics (10 ECTS)  
Scripting for System Automation (5 ECTS)  
Elective x 1 (5 ECTS)

### SEMESTER 2 (SPRING)

Security Management and Law (10 ECTS)  
Offensive Security (10 ECTS)  
Applied Cryptography (5 ECTS)  
Elective x 2 (5 ECTS)

### SEMESTER 3 (SUMMER)

Research Project (30 ECTS)

Elective modules offered may include  
Malware Investigations  
Malware Reverse Engineering  
Threat Intelligence  
Software Vulnerabilities  
Distributed Ledger Technology  
Online Fraud Analytics  
Embedded Security  
Cloud Security  
Big Data Processing  
Data Analytics



# Information Design & Development (M.Sc.)

<b>CREDIT VALUE</b>	<b>COURSE FEE</b>	<b>APPLICATION</b>
M.Sc: 90 ECTS	€6,300 (€1,400 per Semester + €2,100 for 30 Credit Project in Semester 4)	Visit <a href="https://cs.cit.ie/idd">https://cs.cit.ie/idd</a> Closing date: 10th September 2020
<b>ONLINE</b>	<b>LOCATION</b>	
Online over 4 Semesters	Online	

## Overview

Information Developers are individuals who bridge the gap between subject matter experts and that of the end user. The role of information developers is becoming increasingly important given that society is being driven by technology and information developers provide the voice in communicating how issues incorporating technology are framed and developed. The Society of Technical Communication (STC) define information developers or technical communicators as individuals that communicate using an instruction based focus on technical or specialised topics using technology. In essence, information development and technical communications ensures that designs, products, systems and methodologies are documented and conveyed to their target audience to maximise its business value to the organisation.

Simply put - if it is not worth documenting, it is not worth anything.

Over the past number of years, the manner by which information developers perform their role has been impacted by technological advancements in Information and Communication Technologies (ICT) and modern day practitioners need skills from not just Humanities but also Computing and Business domains. The programme seeks to provide a modern day practitioner with the opportunity for in depth study of the advanced rhetorical, compositional theories, project management, and technical skills necessary for them to be leaders in designing, composing, managing, and editing content using a standardised methodological approach using XML based technologies such as DITA.

## Delivery

### Online

No of weeks per semester: 13

No of timetable hours week: 6

Which days: Normally two nights a week

The MSc. in Information Design and Development is delivered and accessed fully online using state of the art Cloud based virtualisation technologies. Learning technologies such as Canvas and Zoom are some of the systems that are used to deliver this innovative programme. Lectures are delivered online by night and streamed live over the Internet and recorded to facilitate easy playback to students.

This method of delivery allows students to participate on the programme from anywhere in the world allowing them to avail on continuous professional development in the field of information development of technical communications. The programme offer great flexibility to students as they can access their lectures and labs anytime, anywhere on any device that has a Web browser.

## Admission Requirements

Applicants who hold a Level 8 degree in any discipline are eligible to apply for the MSc in Information Development programme. Applicants who do not hold a Level 8 degree but have significant industrial experience will be considered on a case by case basis.

## Enquiries

Dr Ruairí O'Reilly  
Department of Computer Science  
E: [ruairi.oreilly@cit.ie](mailto:ruairi.oreilly@cit.ie) or  
E: [cs@cit.ie](mailto:cs@cit.ie)  
T: +353 (0)21 432 6161  
W: <https://cs.cit.ie/idd>

## Modules

The programme places significant emphasis on student learning by doing. It adopts a practical, hands-on, approach to learning, where all modules are fully assessed using continuous assessment methods. There are no formal end of semester written examinations and this ensures that you will learn by doing from the first module to the last.

### SEMESTER 1 (AUTUMN - YEAR 1)

XML in Technical Communications  
Information Design & Development

### SEMESTER 2 (SPRING - YEAR 1)

Multimedia Production  
Information Strategy  
Research Practice & Ethics

### SEMESTER 3 (AUTUMN - YEAR 2)

Document Project Management  
Information Experience  
Information Analytics  
Free Choice Module

### SEMESTER 4 (SPRING - YEAR 2)

Research Project

Module descriptors can be viewed [www.cit.ie/course/CRKINDD9](http://www.cit.ie/course/CRKINDD9)  
Recognition of Prior Learning information is available at [www.cit.ie/rpl](http://www.cit.ie/rpl)



# Software Architecture & Design (M.Sc.)

<b>CREDIT VALUE</b>	<b>COURSE FEE</b>	<b>APPLICATION</b>
M.Sc.: 60 ECTS	€6,500	Apply online at <a href="https://cs.cit.ie/sad">https://cs.cit.ie/sad</a> Closing date: 11th September 2020
<b>DURATION</b>	<b>LOCATION</b>	
Online over 4 Semesters	Online	

## Overview

This programme is designed for software professionals, architects, and senior system design engineers. Managers of architecture teams will also benefit from this programme.

The programme aims to form part of the evolutionary path that a software developer takes to become a software architect, allowing each student to advance their technical career path.

Students will learn about the role of a software architect in creating an extensible and maintainable software solution by applying abstract knowledge and patterns to software architecture, and design. The traditional role of a software architect will also be critically assessed in the face of agile development methodologies and the adoption of tools, and practices that avoid or decouple up front systems or architectural design.

The programme is taught by industry and academic experts who are either practicing software architects, senior technical architects or research active academics in the field.

Software architecture spans a number of pillars which include the application, system, software and enterprise. Application architecture represent the fundamental building blocks of software and at this layer an architect needs to make decisions about the programming language, the constructs, libraries and frameworks that will be used to develop software.

It is rare that an application lives in isolation and typically a system is composed of multiple collaborating applications. At this system level, software architects focus on issues such as reliability, interoperability and integration.

Software architecture is also concerned with the significant elements of the software system from the structure and design of the code to deployment of that code to the live environment. At this layer, a software architect will focus on security, reliability, authentication, performance etc. Across these pillars, software architects make architectural decisions that shape a system and design decisions to ensure his/her vision is realised.

The MSc in Software Architecture & Design programme will provide students with the principles and concepts involved in the analysis and design of large software systems. The programme was developed with significant input from industry's leading experts.

The programme is focused on developing a holistic view, seeing the bigger picture to understand how a software system works as a whole. This approach helps to differentiate software development and software architecture, it also helps to understand how somebody progresses from software development to a software architecture role.

## Admission Requirements

An honours primary degree in a Computing Discipline or equivalent.

Applicants who do not hold a Level 8 degree but have significant industrial experience will be considered on a case by case basis.

## Enquiries

Dr Ruairí O'Reilly  
Department of Computer Science  
E: [ruairi.oreilly@cit.ie](mailto:ruairi.oreilly@cit.ie) or  
E: [cs@cit.ie](mailto:cs@cit.ie)  
T: +353 (0)21 432 6161  
W: <https://cs.cit.ie/sad>

## Modules

The programme places significant emphasis on student learning by doing. It adopts a practical, hands-on, approach to learning, where all modules are fully assessed using continuous assessment methods. There are no formal end of semester written examinations and this ensures that you will learn by doing from the first module to the last.

### SEMESTER 1 (AUTUMN - YEAR 1)

Software Architecture & Design  
Software Process Engineering  
**Electives**  
Decision Analytics  
Programming Language Design

### SEMESTER 2 (SPRING - YEAR 1)

Scalable Microservices  
Research Practice & Ethics  
**Electives**  
Declarative & Concurrent Programming  
Software Vulnerabilities

### SEMESTER 1 (AUTUMN - YEAR 2)

Metaheuristic Optimisation  
**Electives**  
Decision Analytics  
Programming Language Design

### SEMESTER 2 (SPRING - YEAR 2)

Research Project (20 ECTS)





# Artificial Intelligence (M.Sc.)

CREDIT VALUE	COURSE FEE	APPLICATION
M.Sc: 60 ECTS	EU Applicants - Full time: €6,500 EU Applicants - Part time: €7,500 Non-EU Applicants: €12,000	EU applications: Apply online at <a href="https://cs.cit.ie/ai">https://cs.cit.ie/ai</a> Closing date: 10th September 2020
FULL TIME	PART TIME	LOCATION
1 year (2 semesters)	Also delivered online over 24 months.	CIT Bishopstown Campus

## Overview

Artificial intelligence (AI) is a field of computer science that enables computers and machines to perform tasks normally requiring human intelligence.

Its many applications range from chess-playing robots and autonomous cars to speech, image, and language processing, robotic manufacturing, and surveillance systems.

In the twenty-first century, AI has experienced a resurgence following concurrent advances in computer power, large amounts of data, and theoretical understanding. AI techniques have now become an essential part of the technology industry, helping to solve many challenging problems in computer science.

The programme content delivers a comprehensive range of topics, integral to the study of AI. These include machine learning, deep learning, natural language processing, optimisation and big data processing to name but a few. Graduates of the programme may also wish to continue to PhD level in this exciting field of study.

Are you an analytical thinker who enjoys working with intelligent computer systems? Do you like solving challenging problems? Have you got strong coding and mathematical skills? Would you like to know more about topics such as Machine Learning, Knowledge Representation, Metaheuristic Optimisation, Big Data Processing, Deep Learning, Decision Analytics, Research Practice and Ethics? Do you hold an honours degree in Computer Science, Engineering or in a cognate discipline? If so, this Master of Science in Artificial Intelligence degree is the right choice for you.

## Delivery

No. of weeks per semester: 13

Which days: Monday - Friday

## Admission Requirements

An honours primary degree in a Computing Discipline or equivalent.

Applicants who do not hold a Level 8 degree but have significant industrial experience will be considered on a case by case basis.

## Enquiries

Dr Ted Scully  
Department of Computer Science  
T: +353 (0)21 433 6140  
E: [ted.scully@cit.ie](mailto:ted.scully@cit.ie) or  
E: [cs@cit.ie](mailto:cs@cit.ie)  
W: <https://cs.cit.ie/ai>

## Modules

The programme contains challenging and interesting modules delivered by lecturers who are experts in Artificial Intelligence. You will also be presented with opportunities to work on modern research case studies linked to the domain expertise of staff in the department.

The programme places significant emphasis on student learning by doing. It adopts a practical, hands-on, approach to learning, where all modules are fully assessed using continuous assessment methods. There are no formal end of semester written examinations and this ensures that you will learn by doing from the first module to the last.

### SEMESTER 1 (AUTUMN)

Practical Machine Learning  
Knowledge Representation  
Metaheuristic Optimisation  
Big Data Processing  
Research Practice & Ethics

#### Electives

Distributed Ledger Technology  
Software Process Engineering  
Programming Language Design  
Natural Language Processing  
Recommender Systems  
Free Choice Module

### SEMESTER 2 (SPRING)

Deep Learning  
Decision Analytics  
Research Project

#### Electives

Robotics and Autonomous Systems  
Planning and Scheduling  
Fraud and Anomaly Detection  
Free Choice Module

Module descriptors can be viewed [www.cit.ie/course/CRKARIN9](http://www.cit.ie/course/CRKARIN9)

# MUSIC

MA in Music & Technology	43
MSc in Music & Technology	43
MA in Music (Performance/Conducting/Composition)	44



# Music & Technology (M.A. / M.Sc.)

## CREDIT VALUE

M.A., MSc.: 90 ECTS

## COURSE FEE

EU Applicants: €4,000  
Non-EU Applicants: €12,000

## APPLICATION

**EU Applicants:** Apply online at <https://csm.cit.ie/course/CRGMUTE9>  
**Closing date:** 31st August 2020, but late applications may be facilitated

## FULL TIME

1 Year (3 Semesters)

## PART TIME

Please contact Course Coordinator

## LOCATION

CIT Cork School of Music (CSM),  
Union Quay, Cork (primarily) and CIT  
Bishopstown Campus

## Overview

The Masters in Music & Technology has a very practical, hands-on approach. Our ethos is that this cross-disciplinary programme will foster a combination of technical know-how and confidence with creativity and musicality. A Master of Arts award or Master of Science Award can be chosen depending on the student's pathway through the programme.

The Masters in Music & Technology offers training and experience to enhance the talents and skills necessary to work in the creative industries of the future. The programme takes full advantage of the CSM's state-of-the-art performance spaces, Recording Suite (Live, Control, and Editing rooms), Electronic Music Studio, dedicated laboratories and many performance opportunities. A cross-faculty body of experienced lecturers and practitioners in the field delivers the programme. Adding this training to the opportunity to work with some of the finest up-and-coming musicians in Ireland, from all walks of life, will result in an exceptional Music Technologist.

The programme aims to enable learners from different disciplines to interact confidently and competently to with, and find employment within, several fields of study and industry.

## Delivery

### Full-time

No. of weeks per semester: 13

No. of timetable hours per week: 13

Which days: Monday to Friday

Duration: 3 semesters

**Part Time:** Arrangements should be discussed with the course coordinator.

### Full-time

The first two semesters (September - January and January - June) each have a 30-credit load, delivered through a combination of 5-credit mandatory and elective modules. Independent work is undertaken over the final June - August period in respect of a 30-credit project. The type of award, MA or MSc, depends on the nature of the project undertaken during this period.

## Admission Requirements

Applications are invited by way of a submitted online application form and shortlisted candidates will be interviewed in July/August, if required, where the applicant must display musical competence. Normally, an Honours 2.2 Degree in a cognate area is required and work-based experience is an advantage. Recognition is given for relevant prior learning where the applicant does not have a relevant Honours Degree ([www.cit.ie/rpl](http://www.cit.ie/rpl)), and the applicant should contact the course coordinator.

## Enquiries

Hugh McCarthy  
Department of Musicianship &  
Academic Studies  
CIT Cork School of Music  
E: [hugh.mccarthy@cit.ie](mailto:hugh.mccarthy@cit.ie)  
T: +353 (0)21 480 7324

## Modules

### All modules are worth 5 credits (ECTS) unless otherwise noted.

The elective modules afford the learner the opportunity to broaden his/her skills set in other disciplines or to deepen his/her skills set in Music Technology. The elective modules offered in any given year are delivered subject to demand and resource availability.

### SEMESTER 1

Recording Studio 1  
Computer Music 1  
Acoustics and Psychoacoustics

#### Electives

Procedural Programming  
Interpreting Sound & Music  
Audio Electronics  
Digital Culture  
Marketing & Media Law  
Core Instrumental Studies 5  
Core Instrumental Studies 7  
Devised Performance Project  
Ethics & Aesthetics  
Lighting Design

### SEMESTER 2

Recording Studio 2  
Computer Music 2  
Sound Synthesis  
MSc: Audio Signal Processing

#### Electives

Music & Technology 4 - Live Sound  
Audio Signal Processing  
Cybercultures  
Core Instrumental Studies 6  
Core Instrumental Studies 8  
Devised Performance Project  
Lighting Design  
Advanced Stage Lighting

### SEMESTER 3

#### Electives

MA: Electronic Composition Project (30 ECTS)  
MSc: Music & Technology Research (30 ECTS)



# Music (Performance/Conducting/Composition) (M.A.)

CREDIT VALUE	COURSE FEE	APPLICATION
M.A.: 120 ECTS	EU Applicants: €4,000 Non-EU Applicants: €12,000	<b>EU Applicants:</b> Apply online at <a href="https://csm.cit.ie/course/CRGMUSC9">https://csm.cit.ie/course/CRGMUSC9</a> <b>Closing date:</b> 31st May, but some flexibility may be available.
FULL TIME	PART TIME	LOCATION
2 Years (4 Semesters)	N/A	CIT Cork School of Music (CSM), Union Quay, Cork

## Overview

This programme is aimed specifically at:

- Recent graduates wishing to pursue their studies to Masters level
- Established professionals returning to update their skills and qualifications

A full-time, 120 ECTS-credit, taught course for performers (instrumentalists/singers/accompanists/chamber ensembles), conductors and composers

- Instrumentalists/singers receive weekly individual lessons and ensemble coaching sessions as appropriate
- Conductors receive weekly individual lessons and supervised rehearsals
- Composers receive weekly individual lessons and supervised reading/performance/recording sessions

## Delivery and Assessment

Performers are examined primarily through a series of three public recitals/concerto performances; conductors will be examined through a series of three public concerts and associated rehearsals; composers will be examined primarily through the submission of a portfolio of compositions in three instalments. As an alternative to the third public performance, suitable candidates may undertake a dissertation, or a composition or conducting module. The programme will include opportunities to participate in masterclasses with international artists as well as workshops with professionals operating in the international cultural sector.

During the first semester all students are required to submit a Planning Portfolio exploring planning issues, repertoire

and preparation of performances/compositions. Students will also benefit from training in recording technology and interact with peers from the Taught MA/MSc in Music and Technology course. Using the school's state-of-the-art facilities, students will be able to obtain high quality recordings of their performances as well as producing demo recordings. A free choice module is also taken during the first semester. This can be in a cognate area, such as Research Methodology or Music and Technology, but need not be directly related to music.

All students take a common Professional Studies course over the first two semesters dealing with entrepreneurial, organisational, presentational, and technological issues common to all performers/composers, and (during the second semester) each student delivers a case study arising from the lecture material to the cohort of postgraduate students and leads the ensuing seminar.

In the last semester, candidates will also be required to submit a Reflective Portfolio for examination. Although this will consist primarily of written reflections on the learning experiences relating to the core practical elements of the course, it will also include a written summary of the candidate's seminar presentation for the Professional Studies element of the course.

Established professional performers, conductors and composers are entitled to apply for RPL (Recognition of Prior Learning) in respect of the assessment requirements by submitting scores/recordings for assessment. Students may also avail of the Erasmus programme to earn credit through study at a partner institution.

## Delivery

### Full-time

No. of weeks per semester: 15

Duration: 2 Years (4 semesters)

## Admission Requirements

Either a primary degree (a BMus degree or a BA degree with Music as the major subject) awarded with at least 2nd Class Honours in a relevant area, or an equivalent degree in another area together with a recognised professional qualification awarded by a Conservatory or International Examining Body in Performance at Licentiate or Fellowship level), or be prepared to submit to a QQI-approved qualifying process.

Candidates will be required to present for audition/interview, normally in April-June. Late applications may be accepted subject to resources being available.

## How to Apply

Applicants other than CIT Cork School of Music BMus Degree Year 4 students must submit an online application form curriculum vitae, and in the case of performers/conductors, one recording of at least two contrasting pieces (total length 15 minutes) or for composers a portfolio of work. CIT Cork School of Music BMus Degree Year 4 students must submit an online application form ([csm.cit.ie](https://csm.cit.ie)) and their final results in performance modules will determine qualification for entry.

## Enquiries

Ciara Moroney  
Department of Keyboard Studies  
CIT Cork School of Music  
E: [ciara.moroney@cit.ie](mailto:ciara.moroney@cit.ie)  
T: +353 (0)21 432 6893



# ART, DESIGN & MEDIA COMMUNICATIONS

MA in Art Therapy	46
MA in Art & Process	47
Professional Master of Education (Art & Design)	48
MA in E-learning Design and Development	49
MA in Public Relations with New Media	50



# Art Therapy (M.A.)

CREDIT VALUE	COURSE FEE	APPLICATION
M.A.: 90 ECTS	EU Applicants: €7,950 Non-EU Applicants: €12,000	EU Applicants: Apply online at <a href="http://www.cit.ie/course/CRATHPY9">www.cit.ie/course/CRATHPY9</a> Closing date: 30th April 2020
FULL TIME	PART TIME	LOCATION
2 Years (4 Semesters, September to May)	3 Years (6 Semesters, September to May)	CIT Crawford College of Art & Design, 46 Grand Parade, Cork City

## Overview

The programme aims to equip Art Therapy practitioners with a range of therapeutic skills and interventions to work with both individual and group clients in a range of health and community settings. It follows three strands of learning:

- **Theoretical Studies (25 Credits)**
- **Experiential Art Therapy Training (20 Credits)**
- **Clinical Placement and Professional Studies (45 Credits)**

Supervision of the clinical experience is central to the Art Therapy training and is provided in small groups at Crawford College and individually on placement.

Students are encouraged to experience a number of differing placement situations over their training. Please note that students must have their placements in a new setting and not at their workplace.

On completion of this 90 credit modular course, individuals can register with the professional body, Irish Association of Creative Arts Therapists (IACAT).

## Delivery

### Full-time & Part-time

No. of weeks per semester: 13

No. of timetable hours per week:  
12hours College & 12hours Clinical Placement

Which days: Variable

Duration: 4 semesters

The training can be completed either as a full-time two years or part-time over three years. Attendance of four days per week on the full-time course (two college days and two clinical placement days) and two days per week on the part time course (one college day and one clinical placement day).

## Admission Requirements

Applicants normally require:

- An Honours degree, or equivalent, in Visual Art. Where graduate qualifications are not in the Visual Arts, for example, Psychiatric Nursing, Social Work or Teaching, evidence of a substantial and developing body of current and recent art work is essential
- Minimum of one year, or equivalent, full-time clinical/care work in an area relevant to art therapy, paid or voluntary.
- This work may be, for example, in Health or Social Services, Special Education, Community Care or Day Centres, with clients who have a mental illness, learning or physical disability
- Strong portfolio of personal artwork showing an understanding of an appropriate art form, the art-making process showing the applicants relationship and connection to their creative process
- Two satisfactory references from clinical and professional persons who have knowledge of the candidate's education, training and experience
- A good understanding of therapeutic and professional working of Art Therapy and the implications of working as a Therapist.
- Pre-course experience in personal therapy or counselling is preferred:
- A limited number of places are available to non-standard applicants.

## Early Assessment

Because of the clinical placement component of this course, it is a condition of entry that all successful applicants who gain a place on the course will be subject to the National Vetting Bureau (NVB) procedure carried out by the NVB facilitator at CIT. Offers of a place on this programme will be provisional and contingent on the applicant's satisfactory completion of CIT's NVB procedure. Visit [www.cit.ie/gardavetting](http://www.cit.ie/gardavetting)

## Enquiries

Gráinne Young  
Department of Arts in Health and Education  
E: [ccad.enquiries@cit.ie](mailto:ccad.enquiries@cit.ie)  
T: +353 (0)21 433 5220

## Modules

**All modules are worth 5 credits (ECTS) unless otherwise noted.**

### STAGE 1/SEMESTER 1

Art Therapy History & Theory  
Placement Context Preparation  
Group & Personal Process  
Introductory Placement

### STAGE 1/SEMESTER 2

Clinical Theory & Research  
Experiential Frameworks  
Clinical Placement Support

### Group Elective 1

Clinical Practice (10 ECTS)

### Group Elective 2

Professional Practice  
Clinical Placement

### STAGE 2/SEMESTER 1

Experiential Contexts  
Art Therapy Research Proposal  
Advanced Supervision

### Group Elective 1

Advanced Clinical Placement (10 ECTS)

### Group Elective 2

Practice Formulation  
Advanced Clinical Practice

### STAGE 2/SEMESTER 2

Art Therapy Research Project (10 ECTS)  
Practice Evaluation  
Reflective Approaches



# Art & Process (M.A.)

## CREDIT VALUE

M.A.: 90 ECTS

## COURSE FEE

EU Applicants: €4,500  
Non-EU Applicants: €12,000

## APPLICATION

EU Applicants: Apply online at  
[www.cit.ie/course/CRAARTP9](http://www.cit.ie/course/CRAARTP9)  
Closing date: see below

## FULL TIME

1 Year (3 Semesters, late January to early December)

## PART TIME

2 Years

## LOCATION

CIT Crawford College of Art & Design,  
46 Grand Parade, Cork City

## Overview

MA in Art & Process (MA:AP) is an intensive and stimulating taught masters. This research-intensive programme enables students to investigate, develop, and position their art practice in a rigorous learning environment.

MA:AP offers: innovative approaches to learning, individual studio spaces, access to college workshops & facilities, professional experience through collaborative projects, peer-to-peer exchange, and a bespoke visitor lecture series. Students engage in seminars, tutorials and lectures to strengthen their individual practice.

### Semester 1 CRITIQUE:

The spring semester opens the course with an intensive period of interaction and events, contextualising art practice within contemporary critical thinking through seminars, visiting lectures, and a study trip.

### Semester 2 RESEARCH:

This semester is defined by independent research. Having rehearsed research methodologies, this is a period to reflect on and consolidate practice.

### Semester 3 PRESENTATION:

The third semester is defined by intensive studio development with a high level of critical input, which builds towards an exhibition of work. This exhibition is then the object of further learning opportunities, through a final period of critical reflection, characterised by writing, documentation, and working with audience groups.

Lecturing staff includes contemporary practitioners: Ailbhe Ní Bhriain, Colin Crotty, Sarah Kelleher, Lucy Dawe-Lane and UCC's Lewis Glucksman Gallery curatorial team.

Visiting lecturers have included: Clodagh Emoe, Maud Cotter, John O'Connell, Jesse Jones, Alice Maher, David Upton, Matt Packer, Pluck Projects, Mark Garry, Tina Kinsella, Gavin Delahunty, Stephen Brandes, Anna Konik, Niall Sweeney - Pony Ltd, Gema Tipton, Dawn Williams, Something & Son, Woodrow Kernohan, Fergal Gaynor, Sam Keogh, Lisa LeFeuvre, John Gerrard amongst others.

## Grants & Scholarships

Grants are awarded for each academic year (i.e. September - June), therefore, if you are awarded a grant when you start the course in January this only covers you for the first 2 semesters within the first academic year which ends in June for SUSI. You may need to go through a renewal process with SUSI to ensure your grant continues for the following academic year i.e. September - January.

MA:AP hopes to be in a position to offer a scholarship, please visit <https://crawford.cit.ie>

## Delivery

### Full-time

No. of semesters: 3  
No. of weeks per semester: 13  
No. of timetable hours per week: circa 10

Primarily 2 days a week, and introductory workshops in Semester 1 are delivered over the first few weeks.

## Admission Requirements

MA:AP welcomes applicants with diverse backgrounds. Those holding a Level 8 Honours Bachelor Degree in Fine Art or an associated discipline, with a minimum of an Honours 2.2 (or equivalent) are eligible to apply for the programme. Graduates from other subject areas are invited to apply provided they meet the entry requirements.

Applicants who hold a Level 8 award at pass level or a Level 7 award (or equivalent) may be considered on the basis of significant relevant experience.

In certain circumstances mature applicants with professional experience will be considered for eligibility through recognition of prior and experiential learning, policies for which are well established in CIT ([www.cit.ie/rpl](http://www.cit.ie/rpl)).

## How to Apply

Online Application opens in May for course commencing the following January. The MA in Art & Process operates a rolling closing date, the 31st October is the regular closing date after which offers are made to successful applicants. Late applications will continue to be accepted up until 30th December for course commencing in late January.

## Modules

**All modules are worth 5 credits (ECTS) unless otherwise noted.**

### SEMESTER 1

MA: Research Practices  
MA: Fine Art Studio (15 ECTS)  
MA: Institutions and Practices  
MA: Situations

### SEMESTER 2

MA: Fine Art Placing Practice  
MA: Fine Art Studio (15 ECTS)  
MA: Contextual Research (10 ECTS)

### SEMESTER 3

MA: Studio - Presentation (20 ECTS)  
MA: Fine Art - Productions  
MA: Interactions

## Enquiries

Lucy Dawe-Lane  
Department of Fine Art & Applied Art  
E: [lucy.dawe-lane@cit.ie](mailto:lucy.dawe-lane@cit.ie)  
T: +353 (0)21 433 5200



# Professional Master Of Education (Art & Design) (Joint programme with UCC)

CREDIT VALUE	COURSE FEE	APPLICATION
120 ECTS	EU Applicants: €10,800 Please note that these fees are payable to UCC. e-mail: fees@fin.ucc.ie	Please visit <a href="https://www.cit.ie/course/CRARTED9">https://www.cit.ie/course/CRARTED9</a> Closing date: 20th March 2020
FULL TIME	PART TIME	LOCATION
2 Years (4 Semesters, September to June)	N/A	CIT Crawford College of Art & Design, 46 Grand Parade, Cork City & UCC Campus, College Road, Cork City

## Overview

The programme is offered jointly by CIT Crawford College of Art & Design (CCAD) and University College Cork (UCC), it is organised in partnership with second-level schools, normally located within a 50 km (30 mile) radius of Cork city.

On successful completion of the programme, students will have acquired the professional knowledge, the diverse subject knowledge and the understanding and skills that are required to teach Art and Design in a second-level school. Students will have gained practical experience in two contrasting school settings, and will have developed their ability to respond flexibly to the diverse and changing needs of students aged 12 to 18 years. Students will have been challenged, encouraged and invited to question their beliefs and assumptions about the purpose of education, the nature of teaching and learning and the role of the teacher in the 21st century.

**The Professional Master of Education (Art and Design) (PME (Art and Design)) is recognised by the Teaching Council of Ireland for the purpose of registration as a post-primary teacher of Art and Design in Ireland and the EU.**

## Delivery

### Full-time

No. of weeks per semester: 12

No. of timetable hours per week

Year 1: 8 - 10

Year 2: 6 - 7

Which days: Monday to Friday

Duration: 4 semesters

## Structure

### Year 1:

- Curriculum-related Art and design Practice, and the Teaching of Art and Design (10 ECTS)
- School-based activity (30 ECTS) i.e., direct teaching of Art and Design (20 ECTS), and research and professional experiences portfolio (10 ECTS)
- Foundation Studies - areas covered are philosophy, history, psychology and sociology of education; inclusive education, and curriculum and assessment (20 ECTS)

### Year 2:

- School placement-related activity (35 ECTS) i.e., direct teaching of Art and Design (30 ECTS), and a collaborative seminar looking at contemporary issues in Irish schools (5 ECTS).
- The Teaching of Art and Design 2 (5 ECTS)
- Designing Curriculum and Assessment for the Contemporary Classroom (5 ECTS)
- Professional Research Paper in Education (10 ECTS)
- Literacy and Numeracy Development in the Post Primary Classroom (5 ECTS)

## Admission Requirements

Candidates must have a minimum requirement, a H.2.2 primary degree in a Fine Art or Design discipline(s) that is recognised by the Teaching Council of Ireland as qualifying you to teach Art and Design at post-primary level. In some cases, equivalent qualifications that are recognised by the Teaching Council for the teaching of Art and Design may be considered. Eligible applicants will also be interviewed.

### Garda Vetting:

This programme requires applicants to undergo a Garda Vetting process. This requirement is due to the mandatory external placement element of the programme which will bring the applicant into contact with children or vulnerable adults and in which they will assume positions of trust.

### Teaching Council information:

[www.teachingcouncil.ie](http://www.teachingcouncil.ie) or  
E: [info@teachingcouncil.ie](mailto:info@teachingcouncil.ie)  
T: +353 (0)1 651 7900 or  
LoCall 1890 224 224

## Enquiries

Susanna Broderick  
Department of Arts in Health and Education  
E: [ccad.enquiries@cit.ie](mailto:ccad.enquiries@cit.ie)  
T: +353 (0)21 433 5220





# E-Learning Design and Development (M.A.)

M.A.: 60 ECTS

EU &amp; Non EU Applicants €5,250

Apply online at  
[www.cit.ie/course/CRHELDE9](http://www.cit.ie/course/CRHELDE9)  
 Closing date: 6th December 2020

## ONLINE

1 Year  
 (2 Semesters, January to September)

## LOCATION

Online

## Overview

E-learning as a field of study, as an approach to teaching and learning and as an industry has evolved considerably over the last decade and a half. Governments and policy makers have made e-learning a central imperative of their political educational rhetoric and provide substantial funding initiatives to support its development and mainstreaming. Related policies and requirements with regard to lifelong learning, the knowledge-based economy, work-based learning and globalisation combine with the benefits of e-learning as a delivery and support tool to make e-learning one of the most rapidly growing sectors in the worldwide education and training and digital media industries.

### Programme Aim and Orientation:

In the above context the programme seeks to produce developers of cutting edge, educationally effective e-learning solutions. Our graduates, subsequently, will go on to work as designers and developers either directly as part of the burgeoning e-learning sector or in support of in-house e-learning and learning technology departments which are becoming mainstream in a number of other areas and industries.

The programme is a Master of Arts and, as such, reflects a special orientation towards, variously, creativity, culture and design, rather than technology per se.

## Admission Requirements

Direct entrants to this 60 credit award would typically require a Level 8 qualification in fields such as multimedia, digital media, media applications or a relevant area of design. Applicants without such qualifications will also be considered if they can show an equivalent level of learning gained through practice or any other means (see CIT's policy for Recognition of Prior Learning [www.cit.ie/rpl](http://www.cit.ie/rpl)). All other applicants are invited to undertake CIT's 30 credit online Certificate in Digital Media Design and Development (CR\_HDMTE\_8) which runs from September to December.

In all cases final admission to the course will be on the basis of interview.

## Enquiries

Dr Gearóid Ó Súilleabháin  
 Department of Media Communications  
 E: [gearoid.osuilleabhain@cit.ie](mailto:gearoid.osuilleabhain@cit.ie)  
 T: +353 (0)21 433 5933

## Modules

### All modules are worth 5 credits (ECTS) unless otherwise noted.

The programme is delivered entirely online using many of the same e-learning tools and technologies which also form the course curriculum. All registered students are also, uniquely, given access to a virtualised desktop which provides all their multimedia software and remote storage requirements for the duration of the course. This means the programme may appeal to those who, for whatever reasons, cannot commit to attending regular face-to-face lectures and labs or who otherwise appreciate the flexibility and convenience of studying online.

### SEMESTER 1

E-Learning Instructional Design  
 Education Research & Proposal (10 ECTS)  
 New Media Workplace  
 Narrative & Games for Learning  
 E-Learning Authoring

### SEMESTER 2

E-learning Thesis (20 ECTS)  
 E-learning Project (10 ECTS)



# Public Relations with New Media (M.A.)

CREDIT VALUE	COURSE FEE	APPLICATION
M.A.: 90 ECTS	EU Applicants: €4,550 Non-EU Applicants: €12,000	EU Applicants: Apply online at <a href="http://www.cit.ie/course/CRBPRNM9">www.cit.ie/course/CRBPRNM9</a> Closing date: 18th August 2020
FULL TIME	PART TIME	LOCATION
1 Year (3 Semesters, September to June)	See below	CIT Bishopstown Campus

## Overview

This innovative MA programme offers the opportunity to gain a comprehensive understanding of public relations as a form of communication and pays particular attention to the growing importance of digital and interactive media on the practice of public relations and professional communications.

By developing student's research, planning, managerial and multimedia skills the course aims to produce graduates who can display leadership and show the capacity for innovation within the dynamic and fast evolving professional communications industry. Course content focuses strongly on PR tools and techniques, particularly within the growing new media environment, and on the increasing globalisation and convergence of the media industries.

Through liaison with PR professionals and by working on 'live' industry projects, the course aims to equip graduates with the knowledge, skills and competencies required to effectively function as a public relations professional in an era of high-speed and interactive digital communications.

## Mentorship Programme

All students will participate in the Public Relations Mentorship Programme which aims to prepare him/her for a career in the communications industry through a series of presentations and one-to-one contact with industry professionals. Students will prepare a career development plan, liaise with the CIT Careers Service, participate in professional networking, both on and offline and develop important career-oriented skillsets aimed at enhancing employability and career prospects.

## Delivery

### Full Time

No. of weeks per semester: 13

No. of timetable hours per week: 16

Which days: Monday to Thursday

Duration: 3 semesters

### Part Time:

Applicants may choose to undertake this programme on a part-time basis. Part-time students take modules on a phased basis and achieve the programme qualification over a number of academic years.

## Admission Requirements

Entry requirements for this course will be in accordance with standard Institute admissions procedures. Entrants will be expected to hold minimum of a 2.2 honours degree.

Admission to the course will be on the basis of interview. Applicants without such qualifications will also be considered if they can show an equivalent level of learning gained through practice or any other means (see CIT's policy for Recognition of Prior Learning [www.cit.ie/rpl](http://www.cit.ie/rpl)).

## Enquiries

Emmett Coffey  
Department of Media Communications  
E: [emmett.coffey@cit.ie](mailto:emmett.coffey@cit.ie)  
T: +353 (0)21 432 6118

## Modules

### All modules are worth 5 credits (ECTS) unless otherwise noted.

The elective modules afford the learner the opportunity to broaden his/her skills set in other disciplines or to deepen his/her skills set in the wider professional communications environment. The elective modules offered in any given year are delivered subject to demand and resource availability.

### SEMESTER 1

PR Theory & Application  
Ethics & Social Responsibility  
Multimedia Production  
Media Writing  
Research Methods and Practice  
**Electives**  
Brand Management  
Digital Marketing Environment

### SEMESTER 2

PR and New Media  
New Media Production  
Cybercultures  
Business Communication & Online Writing  
Public Relations Campaigns  
**Electives**  
Media Law, Ethics & Professional Practice  
Event & Project Management  
Enterprise and Innovation

### SEMESTER 3

Public Relations MA Project (incorporating Mentorship Programme) 30 ECTS

# GRADUATE PROFILES AT A GLANCE

## MASTER OF ARCHITECTURE (M.ARCH)

### KIERAN CREMIN & EOGHAN HORGAN



CIT/UCC Architecture students Kieran Cremin and Eoghan Horgan's project "Entangled City" was awarded a European Architectural Medal in Architecture (Prize for Innovation) in December 2015.

"This prize is a fitting and well-deserved acknowledgement of our student talent and their incredible work ethic; all of which, well hidden behind modest exteriors" (Jason O'Shaughnessy, Master of Architecture Course Director).

The project addresses the cultural dissonance between Prague's history and present-day tourist industry. You can view the full project and the Jury comments at this link <https://eam.uauim.ro/projects/2015/22/>

Kieran has worked in architectural practice with Butler Cammoranesi Architects and DATUM Architecture. He is a part-time Lecturer in Cork Centre for Architectural Education (CIT/UCC).

Eoghan has worked in architectural practice with O'Donnell/Tuomey Architects, and is a Lecturer in the Cork Centre for Architectural Education (CIT/UCC), and the Department of Architecture at CIT.

## PHD (DOCTOR OF PHILOSOPHY)

### DR AIDAN HARNEY



"Completing my PhD at CIT was an extremely positive experience. I was fortunate to have not one, but two, terrific supervisors. Their enthusiasm for my research question generated great vitality. Their flexibility in terms of availability and mobility was of immense assistance to me, given the nature of my role. The rigor they applied to the process throughout was very welcome. The CIT on-line library is a rich research utility and I found all of the support staff to be most helpful. All in all, the process was demanding and challenging but very worthwhile in terms of expanding my capability to engage in research and generate new knowledge. I would like to extend thanks to the great team at CIT."

## PHD (DOCTOR OF PHILOSOPHY)

### DR ALPHONSUS (ALFIE) KEARY

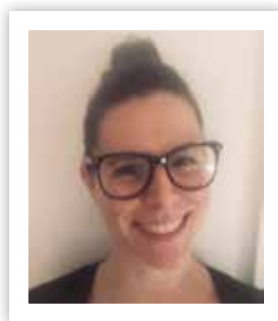


“Having worked in the ICT sector throughout my career, returning to education at CIT to complete my PhD with the Department of Computer Science provided an ideal mix of academic and real-world practical opportunities.

My research centred around data analytics and machine learning. Working with the CIT SIGMA group and the Departments of Mathematics was instrumental for me completing my thesis. Staff at both facilities were extremely generous with their time and assistance helping me with the achievement of my research goals. Their focus on both highly validated academic research in conjunction with real-world research applications has been paramount for me. There were certainly challenges over the years, and when, during a number of the extremely tough phases any PhD researcher will naturally go through, it has been the belief that my supervisors and all at CIT wanted me to succeed, this is what kept me as a mature student on the path to successfully completing my PhD. Thanks to you all at CIT, for such an incredible rewarding and life-changing learning journey.”

## MSC IN DATA SCIENCE AND ANALYTICS

### SINÉAD BRACKEN



“Studying in CIT was an extremely rewarding and positive experience. Upon recommendation from a colleague, I embarked on the MSc in Data Science and Analytics with the hope of learning coding. This course exceeded my expectations with its mix of mathematics, statistics, data manipulation and visualisation. Completing assignments using real-world data with real-world applications was fruitful and fulfilling. It was clear from the outset that the course was designed and implemented to ensure students would gain the skills required for their future careers. The staff were friendly, approachable and always went the extra mile to help students. I would highly recommend the MSc programme in Data Science and Analytics to prospective students.”

## MSC IN ARTIFICIAL INTELLIGENCE

### PRAVEEN JOSHI



Praveen is from India and is a current PhD student in CIT. He graduated with a MSc in Artificial Intelligence and says “The modules in the MSc programme were perfectly aligned to my needs. Apart from the coursework and modules, CIT provides everlasting support to its students with its knowledgeable and helpful staff. Choosing CIT was one of the best moves in my life and it has helped me stand out from the crowd because of the knowledge and reputation of the institution. I would recommend the course to anybody who wants to pursue their career in AI with an MSc from a world-class institution with global exposure.”



## MA IN E-LEARNING DESIGN AND DEVELOPMENT

### SARAH MCGOWAN



"The MA in E-Learning Design and Development had the perfect structure for me as someone working full-time. While it did involve a lot of dedication, it was flexible enough that I could coordinate my time around daily work and family commitments. The lecturers were fantastic and supportive throughout, and they provided me with all the additional support I needed! The topics covered gave a great insight into the different areas of E-Learning and Learning & Development in different industries, and even helped me to pursue new career opportunities within this field. I am now a Learning and Development manager within Ireland's fastest growing start-up, eShopWorld."

## MA IN PUBLIC RELATIONS WITH NEW MEDIA

### GILLIAN LYONS



"The course contained a good mix of PR, digital marketing as well as content writing - something not many courses offer despite the massive growth in the digital sector."

The course provided me with vital skills and knowledge to kick start my career in Digital Marketing. I have worked on exciting projects including social campaigns, e-learning courses, animations, and overseeing new website builds for well-known clients such as Club Orange, Fáilte Ireland, and the GAA. The lecturers were fantastic and I could not recommend the MA in PR with New Media course highly enough!"

## MA IN DIGITAL MARKETING STRATEGY

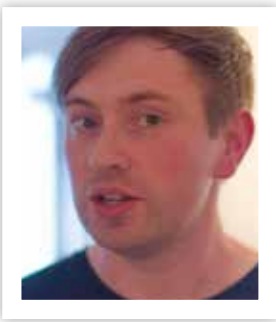
### JANINE GALVIN



"I took this course because it is so on point. Everything is digital, it's the now and future of marketing. The instructors and visiting lecturers are unbelievable; they are enthusiastic, energetic and knowledgeable with up to date knowledge of the industry and the latest trends. They provided me with the tools and techniques to work on the next brands. It's an opportunity to learn about brand strategy, design and development of ecommerce sites, search engine marketing, and digital marketing analytics... and it turned out to be the best decision I ever made."

## MA IN ART & PROCESS

### PÁDRAIG SPILLANE



"I chose this programme to bring more attention and stimulus to my photography and image-making practice. At that stage, I needed the concentrated emphasis and structure of working within this taught MA programme, especially with the input of tutors plus a diverse and active peer group. It was the most exciting and formative year with both the freedom to experiment and the structure to explore my areas of specialty.

The most important influence from the MA was trusting myself and becoming self-directed in my work and research. The MA, with its studio and learning environment, was a place I could trust and become practiced in what art and its possibilities are for social and other involvements. It assisted me in how I made the context of my work bigger. It also built up my visibility, creating connections for my work as an artist and a curator.

I now teach at CIT CCAD and work with students to progress their ideas in conceptual and material ways. This has fed into my curatorial practice of showing artworks to different audiences."

## MA IN ART THERAPY

### MICHAEL O'TOOLE



Since graduating in 2017, Michael has worked in addiction clinics in Ireland and abroad, and for the Education Training Board, where he works with refugee groups and disadvantaged families. Michael continues his work as an Art Therapist in the midlands and has plans to work abroad again supporting families in disadvantaged areas.

"The Art Therapy course at CIT CCAD was an amazing experience. The course prepares you with a wealth of knowledge, from guest lectures to your own personal tutor and group supervisions. With the support from your tutors, well delivered lectures and workshops, the course works in theory and in practice, and is well rounded for all types of thinkers. In this course you will gain the experience, knowledge and work ethics that will establish your own professional career."

## PROFESSIONAL MASTER OF EDUCATION (ART & DESIGN)

### JEANIEENNE MCCARTHY



Jeanienne has worked as a teacher since graduating in 2016. Although she found the course demanding, she comments "it enabled me to recognise my own strengths and I developed a confidence and determination that I have taken with me. My tutors were positive role models offering advice, support and encouragement and I hope that this is something I emulate in my own professional practice.

The PME teaching practice equipped me with the skills and knowledge I needed to confidently begin my career in education. As a teacher of art, craft and design my aim is to provide pupils with opportunities to grow as autonomous, creative, motivated and happy individuals who aspire to fulfil their potential. I feel privileged to work in an area which is fulfilling and meaningful to me and which also allows me to draw upon my own creativity."

## MSC IN MUSIC AND TECHNOLOGY

### SHANE O'SULLIVAN

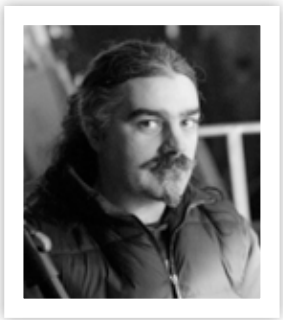


Shane completed his MSc in Music and Technology in 2011. He worked as a guitar instructor, music teacher and sound designer while pursuing his Masters. Here, Shane featured with emerging theatre company JustMakelt Productions on projects such as *Wish I Was...* and *Johnny*.

Following graduation, he took up a role as a radio broadcast engineer and studio manager with Communicorp, first in their Newstalk studio on Opera Lane, and later in the joint Today FM and Newstalk studios in the Cork Opera House. Shane also works as a Metadata Archiver for Newstalk on a BAI project archiving the stations's 2002-2016 shows. Shane has also continued to work as a sound designer during this period, featuring in productions such as *The Great Hunger* (Theatre Makers), *Splintered Soul* (Chattyboo Productions), *A Christmas Carol* (Oceans of Notions Theatre Group), *Arrival* (JustMakelt Productions), and *When We Were Young* (Everyman Theatre Productions) amongst others. Shane is the guitarist of Elk, an Irish progressive rock trio on the Limerick-based record label *Out On A Limb*."

## MSC IN MUSIC AND TECHNOLOGY

### RUPERT MACCARTHY-MORROGH



Mature student Rupert MacCarthy-Morrogh has worked in the media and entertainment industry for over 25 years. In 2005 he established SLR.ie a film lighting rental company. SLR has grown to become the largest independent broadcast lighting company in Munster, providing equipment and personnel for national and international broadcasters including BBC, National Geographic, Discovery, ITV, Sky, PBS, NHK, RTE, TV3, and TG4.

In 2014, Rupert graduated with a First class honours MSc in Music and Technology from the CIT CSM. His thesis subject of a suggested new approach in three Dimensional Surround Sound Capture & Reproduction is representative of his interest in film and television production.

While attending CIT CSM, Rupert directed 'Storage' his first feature film. In 2017 the film won the Stockholm independent film festival award for art house film and the European Cinematography Award for best drama. The score for this award winning film was composed and performed by his fellow Master's student Darren Sheehan.

## MA BY RESEARCH IN MUSIC

### CORAL O'SULLIVAN



Coral is a Law Graduate of University College Cork and a graduate of the BMus Programme at the CIT Cork School of Music. In 2013, Coral was awarded an M.A. by Research for her work on *The Commissioned Works of the Contemporary Music Seminars of the Cork International Choral Festival 1962-2012: an Annotated Catalogue*. She is currently employed as a Lecturer in Oboe at the CIT Cork School of Music and also at the County Cork School of Music. Coral is a Librarian with the Cork County Library and Arts Service, and is an active freelance musician.

## MA IN MUSIC PERFORMANCE

### BRENDAN GARDE



Brendan graduated with a First Class Honours MA in Music Performance in 2019, when he was awarded the prize for the highest-placed CIT CSM Master's student. He combines a violin teaching practice with a busy freelance career as a chamber musician and soloist, and as an orchestral musician, working with the RTÉ Orchestras and the Cork Opera House Concert Orchestra. Brendan was recently awarded the Cork Orchestral Society Emerging Artist Award 2019, which includes a solo recital in 2020.

## MA BY RESEARCH

### JENNY DEMPSEY



"A perfect balance of space and support. I had a clear idea of my research subject and, from the start, was given the space to explore this area. At the same time, I was provided with an array of college supports: ranging from access to the well-stocked library, to workshops in academic and technical skills and most importantly, two insightful tutors who shared many hours of encouragement, guidance and advice."

## MSC IN MARKETING PRACTICE

### CLAIRE O'DONOGHUE



"The MSc in Marketing Practice helped me gain new insights into the marketing profession. For me, one of the key differentiators of this course is the practical aspect which sees students developing marketing plans for real life companies. This partnered with the high level of interaction between students and lecturers meant I was truly able to advance my skills in marketing."

The placement aspect allowed me to apply everything that I learnt during the classes to actual business situations. After completing my placement, I was lucky enough to be kept on in the organisation and am now an Assistant Brand Manager for SuperValu in Musgrave. I am delighted to have chosen this course and would definitely recommend it to anyone interested in pursuing a career in marketing."



## MA IN HUMAN RESOURCE MANAGEMENT

### PAUL KENT



“Employed in a Technical Learning & Development role within PepsiCo, I support the Capability building process for our associates worldwide. Working with a worldwide audience and building capability by doing more than training, I needed a programme that would give me both a theoretical and practical comprehension of how we can continue to develop people. As well as developing the right people, we need to understand how we attract, recruit and retain these people. With limited exposure to the HR environment, this programme gave me the opportunity to build on the knowledge that I had and grow this for the benefit of my organisation. The content initially attracted me to the programme but I have also got great exposure to newer areas and it has been a great source of personal development. The programme provides a broad learning base for students across many aspects including Employment Law, Business and even some Psychology. Human Resources is becoming a strategic element in the modern business environment and people with this skillset can offer a competitive advantage. CIPD accreditation was also very important for me. I would highly recommend the MA HRM. It is not a programme designed solely for the HR professional; I believe that anyone with a role to play in the strategic development of the people within their organisation will benefit greatly from this programme. There is a strong blend of academic learning and practical knowledge ensuring that skills are practiced immediately and it is this application that makes the course challenging and interesting but ultimately effective and rewarding.”

## PHD (DOCTOR OF PHILOSOPHY)

### DR LINDA BOLGER



“My time in CIT as a postgrad was fantastic. The staff are so friendly and approachable and the facilities on campus are second to none. It's just an amazing environment to be in. I completed my PhD in the Department of Sport, Leisure and Childhood Studies. The lecturers and other postgrads became not just supervisors, lecturing staff and colleagues, but great friends that I'm sure I'll stay in contact with. During my PhD, I was lucky enough to get some great experience lecturing and leading practical sessions on a variety of different modules. I also had the opportunity to present my research at a number of different conferences, including an international conference in Essen, Germany. I also played camogie with CIT and made friends with some fantastic people who are extremely passionate, dedicated and great at what they do. The CIT GAA club was more like a family than a sports club and it was great to play with and be part of the club. I highly recommend CIT, my time there was amazing with very fond memories.”

---

All information in this publication is accurate at the time of printing. Changes of courses, options, fees and dates may occur between printing and September 2020. In addition, factors such as the unexpected unavailability of staff, or a level of application below that which is minimally required to allow a course/programme to run, may make it practically impossible, or prohibitively expensive for the Institute to offer an option listed in this publication. Any offer of a place made to you is subject to your consenting to the incorporation of this notice as a term of any such offer.

All applicants should make all reasonable effort prior to registration to ensure that the course/programme they are registering for meets their expectations, by contacting the relevant course coordinator or prospective supervisor/research coordinator.

The information set on these pages is intended as a guide only and shall not be deemed to form a contract between the Institute and an applicant or any third party.

E&OE







CIT School of Graduate Studies

t: 021 433 5099

e: [graduate.school@cit.ie](mailto:graduate.school@cit.ie)

[www.cit.ie/graduateschool](http://www.cit.ie/graduateschool)